

# Dzud disaster in Mongolia

5th meeting of the Expert  
Group on  
Disaster-related Statistics,  
20 th September, Seoul

Ch Tungalag, Officer of National Statistical  
Office of Mongolia



# Contents

- Dzud disaster in Mongolia
- Current studies on Dzud
- Disaster economic loss of Dzud
- Conclusion

# Natural disaster in Mongolia

- Dzud is one of the types of disasters, it's impacts effects to Mongolia's social and economic sector as well as to many other key development issues such as public health, migration, urbanization, a rate of poverty and unemployment even to the National security.
- Drought and zud are the most important natural disasters, and cause enormous losses,
- The traditional livestock husbandary is affected be natural hazards very often and experienced significant impact.

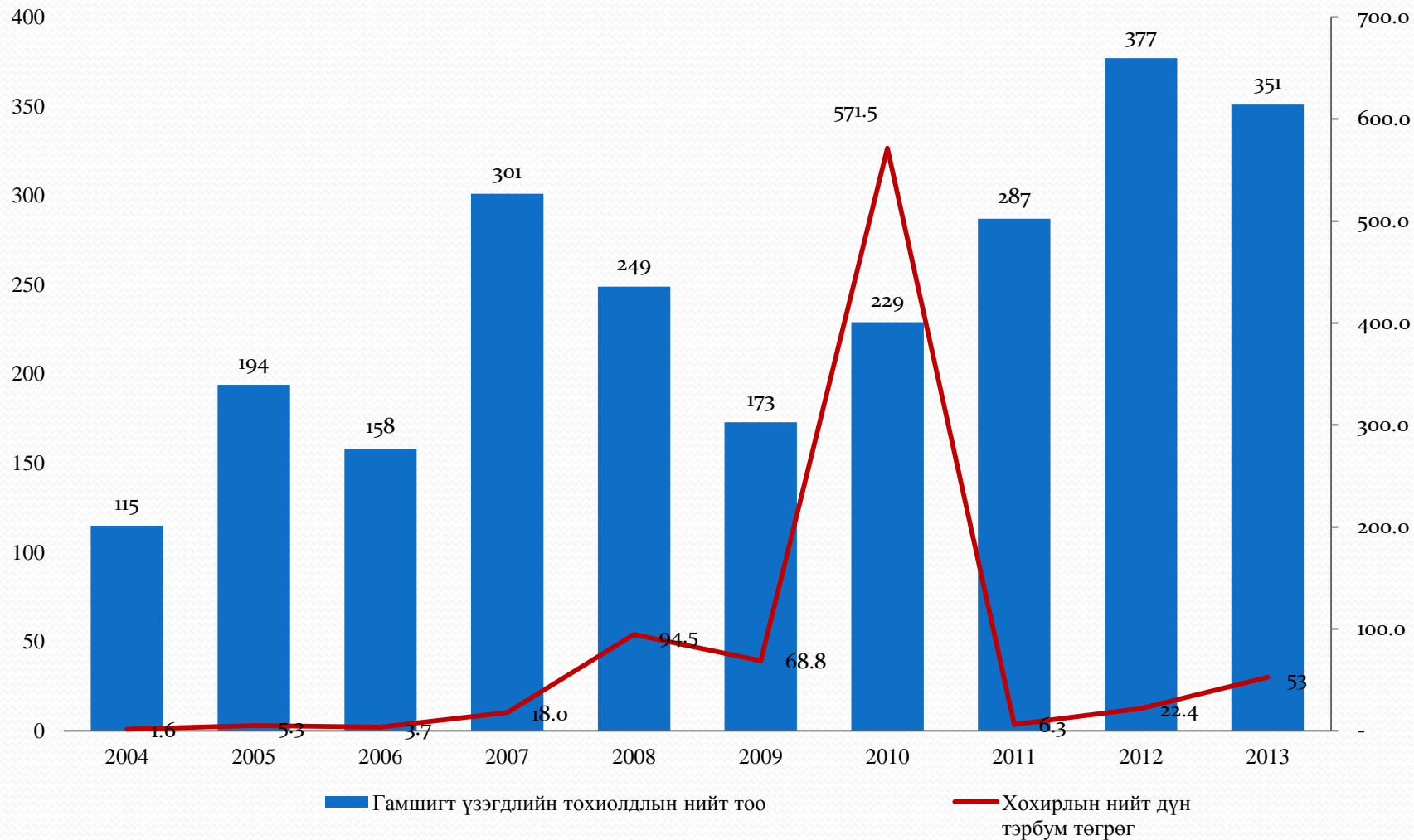
## Current studies on Dzud

- “Dzud means meteorological hazard’s phenomena that cause animal losses due to lack of ability to recover energy losses by pasturing during winter and spring time, disrupts the normal functioning of livestock sector, results serious negative impact to society and economy which exceeds the domestic capacity of the state, aimag and local community to respond it and cope with their negative impact”

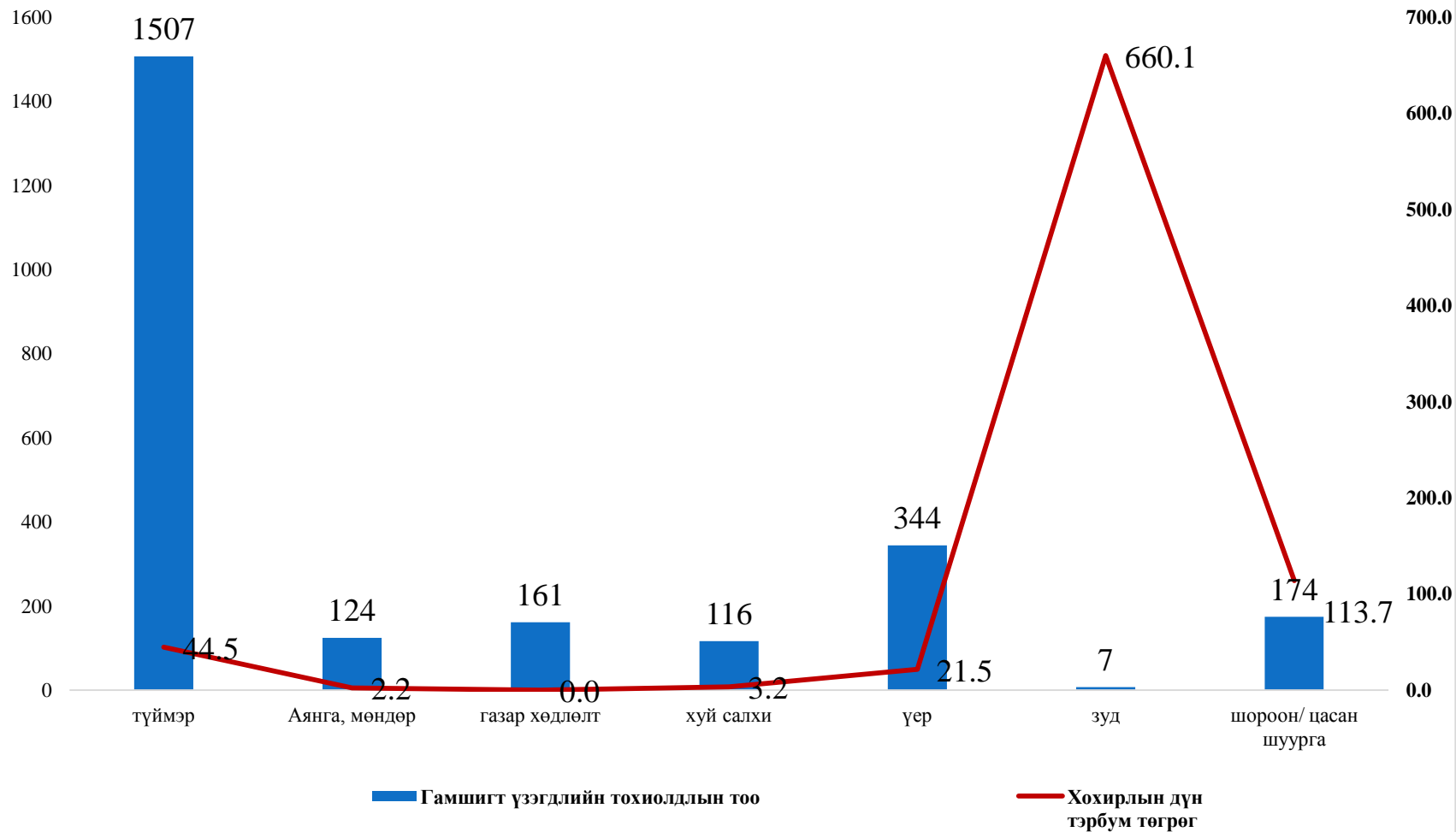




## Number of Disaster and Cost of Damages, Mongolia, by year

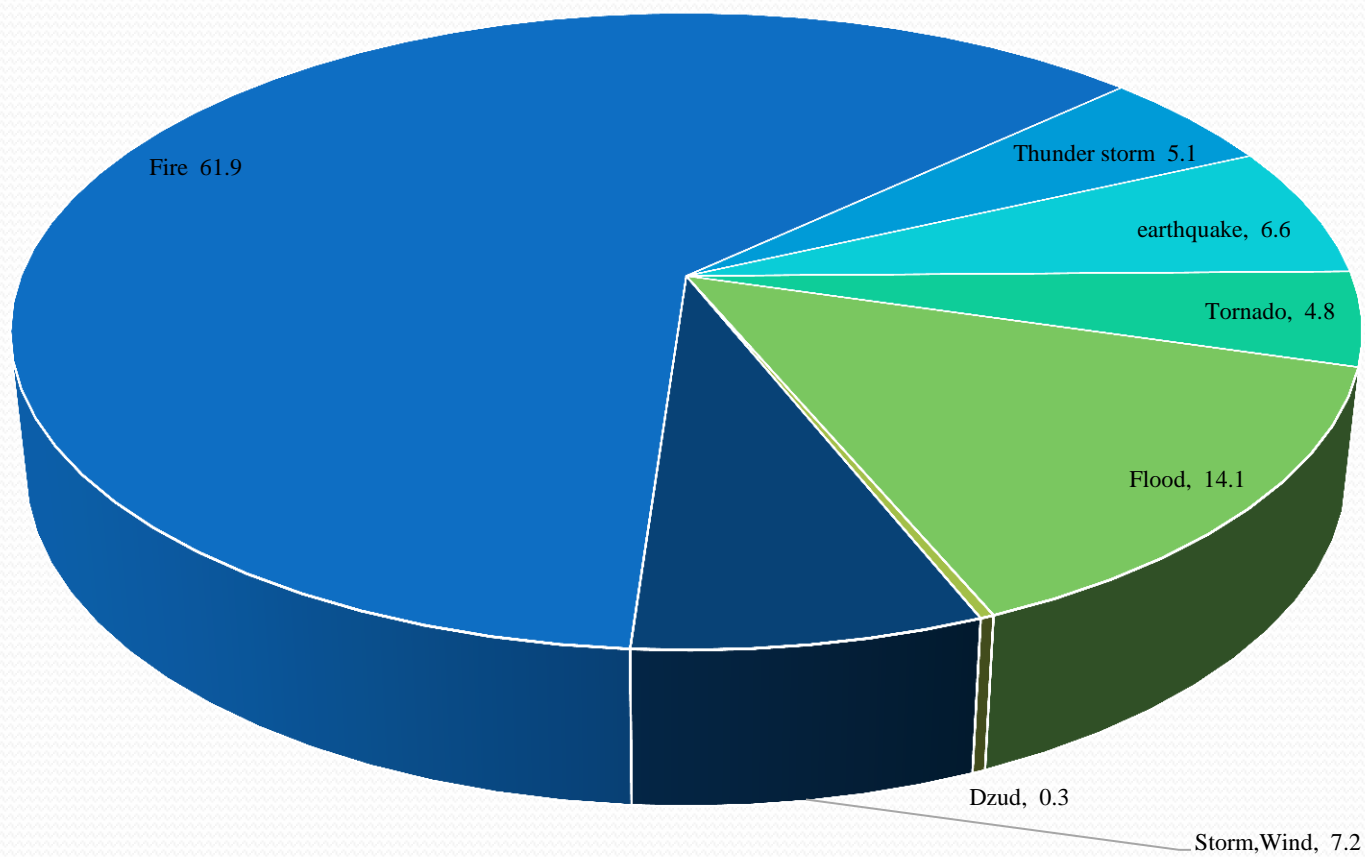


## Number of Disaster and Damages, Mongolia, by type of disaster, 2004-2013

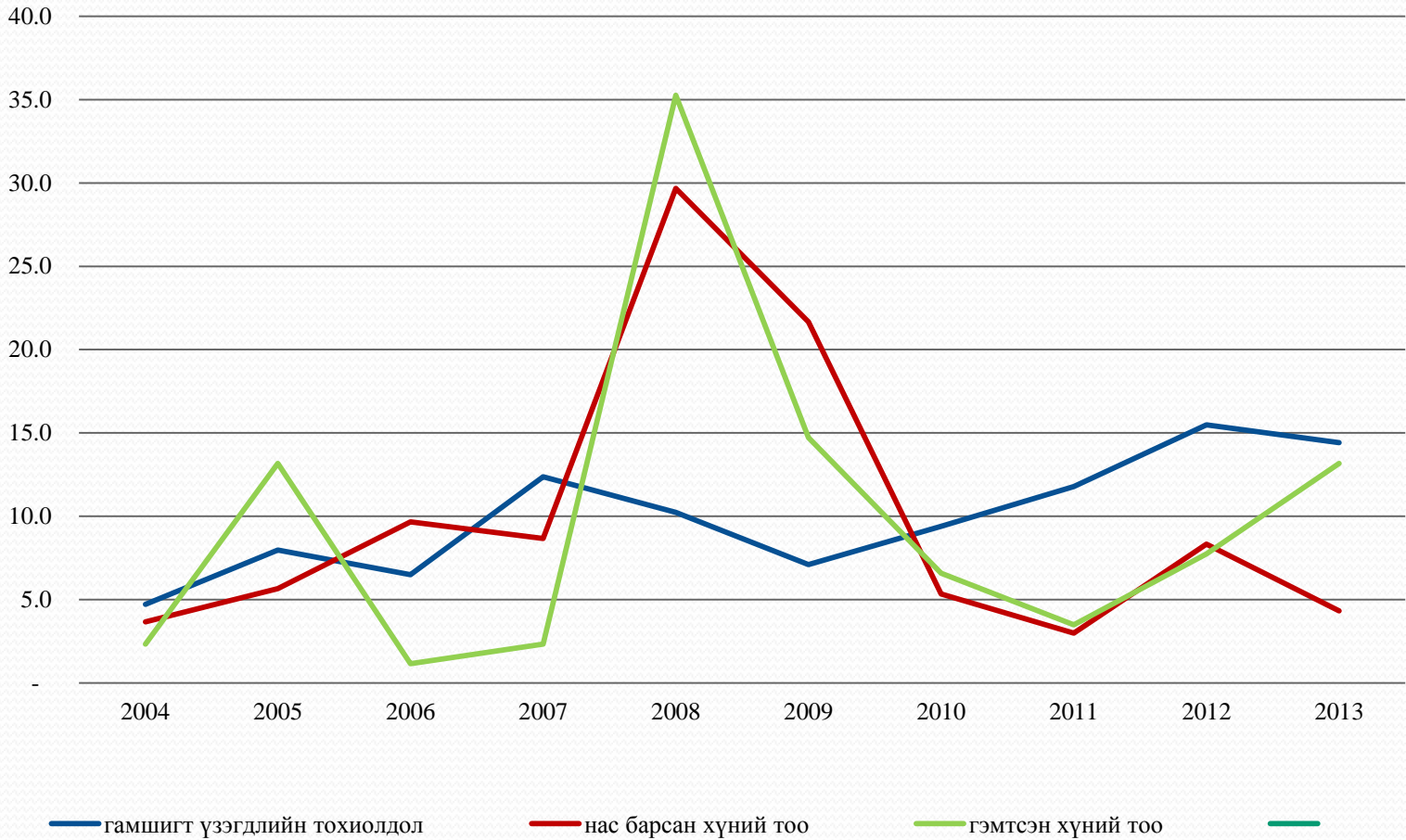




## Disaster Occurance , Mongolia, 2004-2013 by percentage



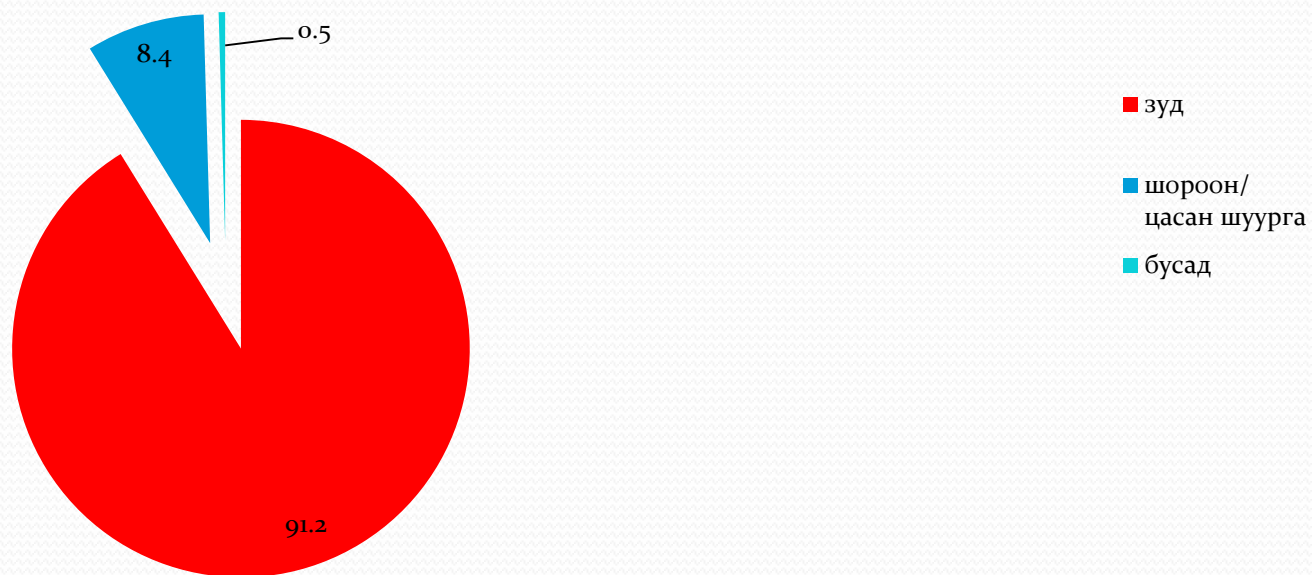
## Disaster Occurrence and Human Impact, by type, (percentage share to total)



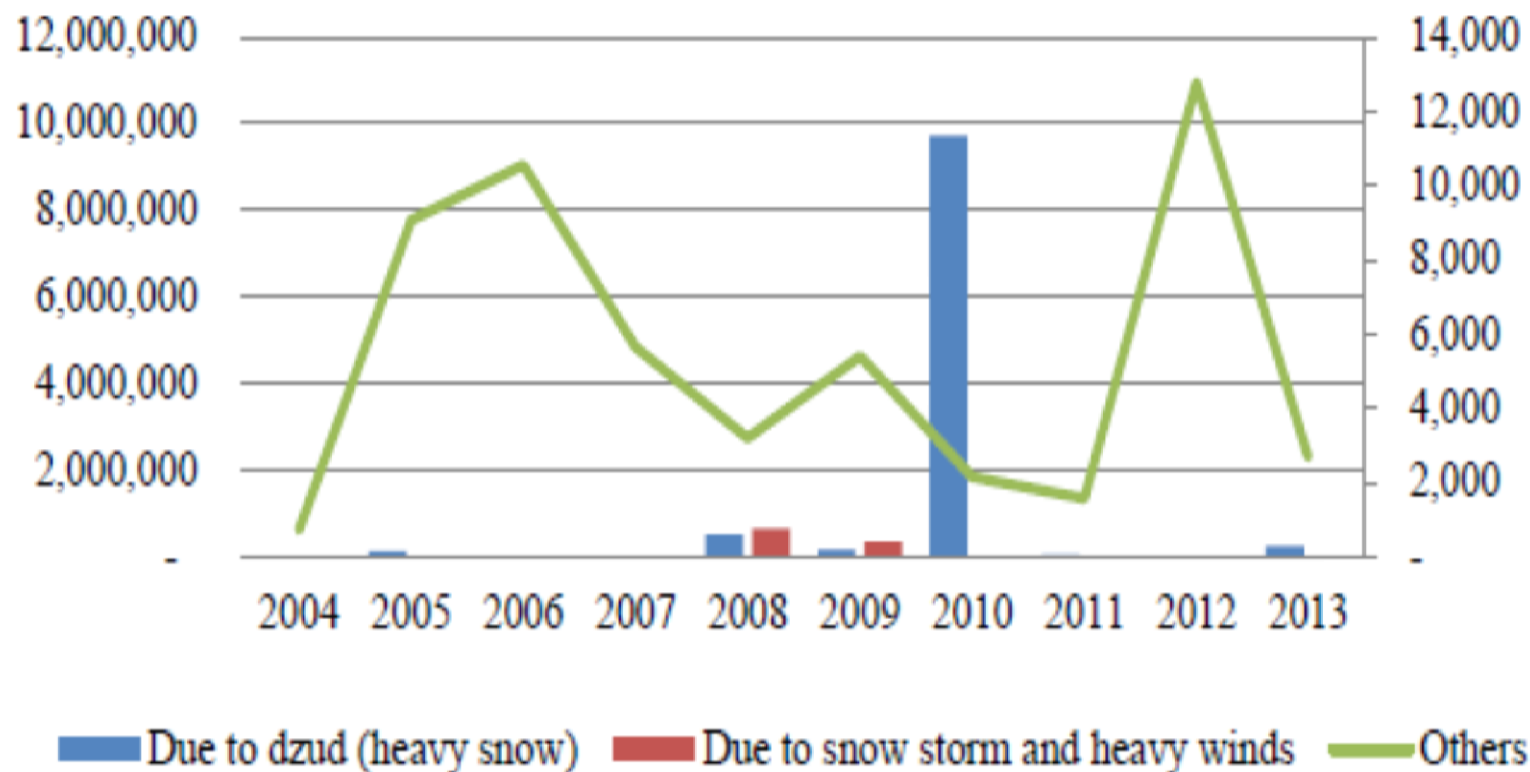
# Losses in livestock sector caused by drought and dzud

Years disaster occurred	Disaster type	Affected aimags and soums	Total losses (head of animal million )	
			Number (adult animal )	Percentage (adult animal )
1944-1945	Drought, Dzud	9 aimag, 65%	8,1	33,2
1954-1955	Зуд	9 аймаг	1,9	8,2
1956-1957	Dzud	11 aimags	1,5	6,2
1967-1968	Dzud hoof	13 aimags, 80%	7,8	11,9
1976-1977	Dzud	15 aimags, 90%	1,7	8,6
1986-1987	Dzud	11 aimags, 80%	0,8	3,6
1993	Dzud	3 aimags, 30 soums	1,6	6,4
1996-1997	Dzud	11 aimags, 69 soums	0,6	2,1
1999-2000	Dzud	12 aimags, 157 soums	3,49	8,9
2000-2001	Drought, dzud	13 aimags, 147soums	4,75	13,1
2001-2002	dzud	13 aimags, 114 soums	2,91	10,5
2009-2010	Drought, dzud	17 aimags and 95 soums	9,7	22,0

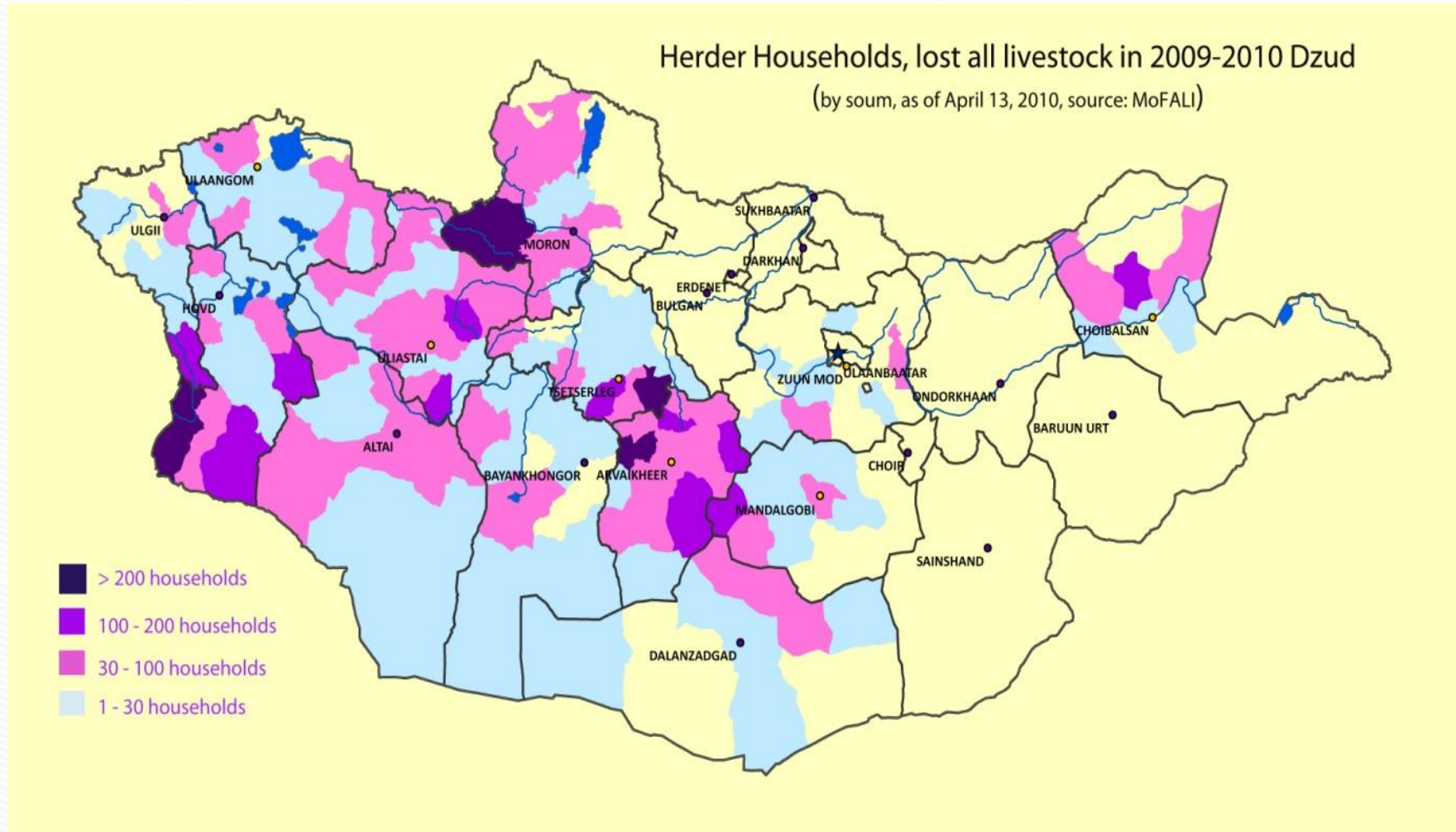
## Percentage share to total of Livestock Damage 2004-2013



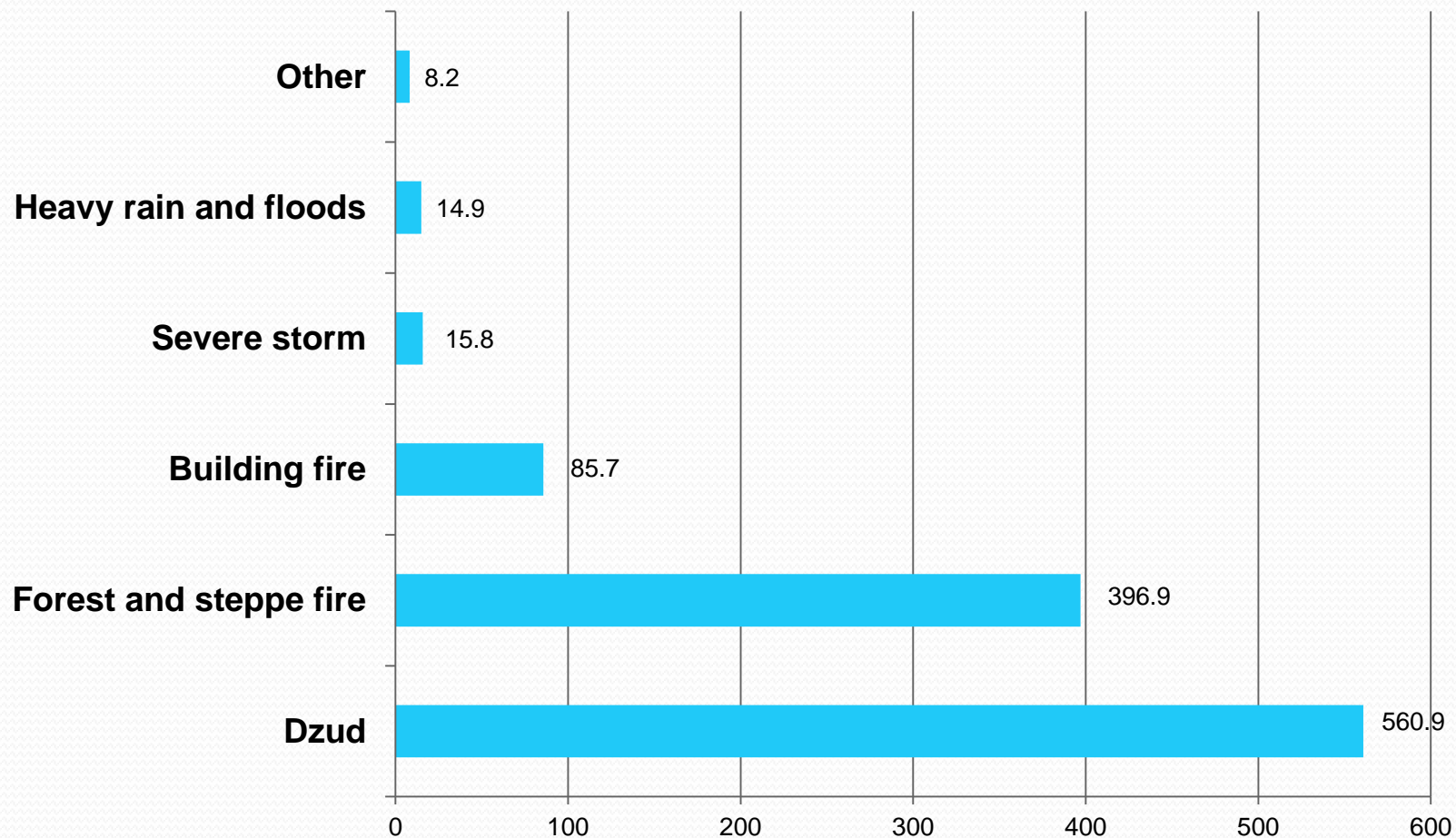
**Figure 12. Number of livestock Damages caused by natural disasters in Mongolia, 2004-2013**



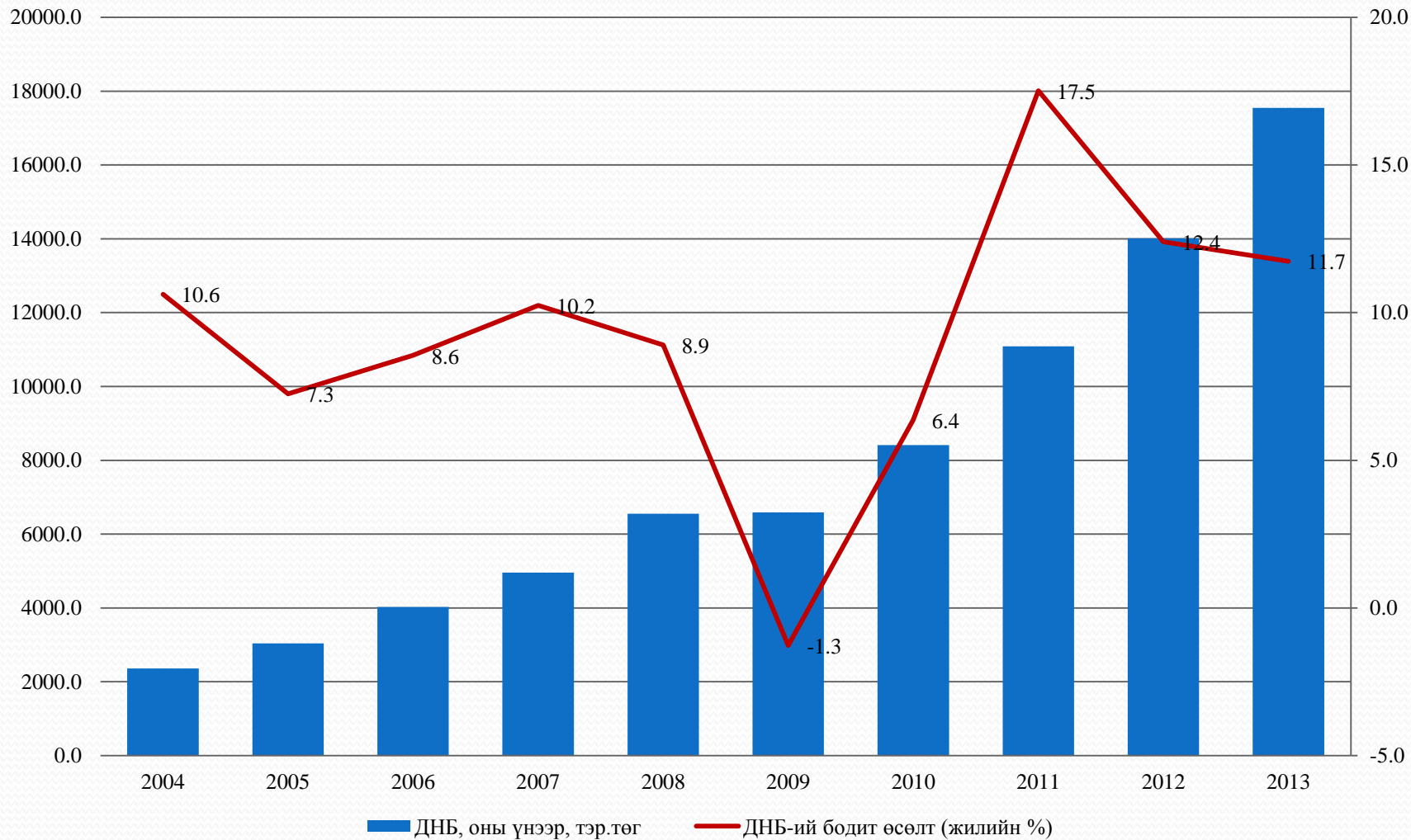
# Number of Households who lost all livestock in 2009 - 2010 Dzud



# Economic losses from natural and human induced hazards by type (2004-2016) /mln.MNT/

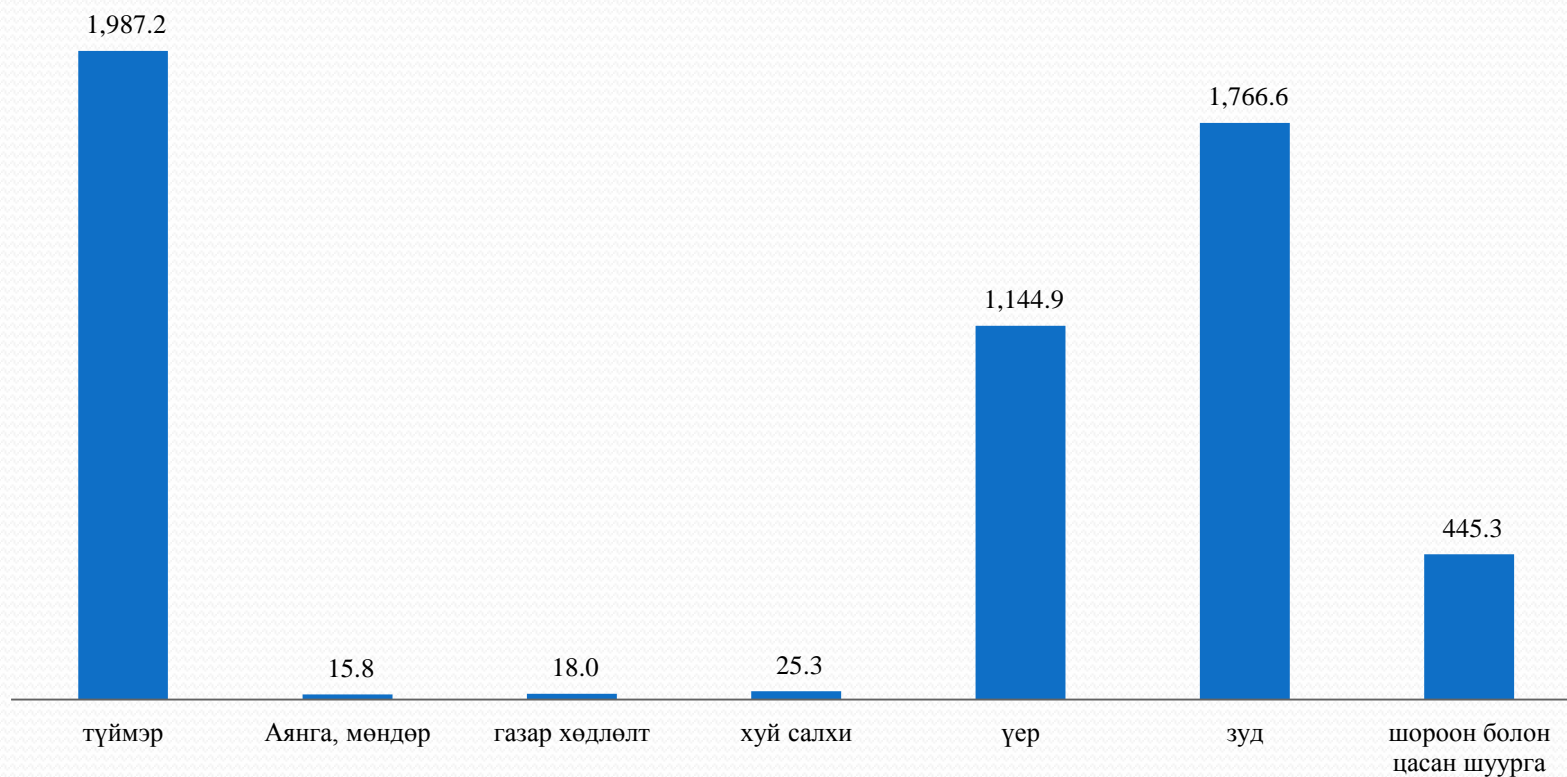


## GDP AND ECONOMIC GROWTH, MONGOLIA, 2004-2013

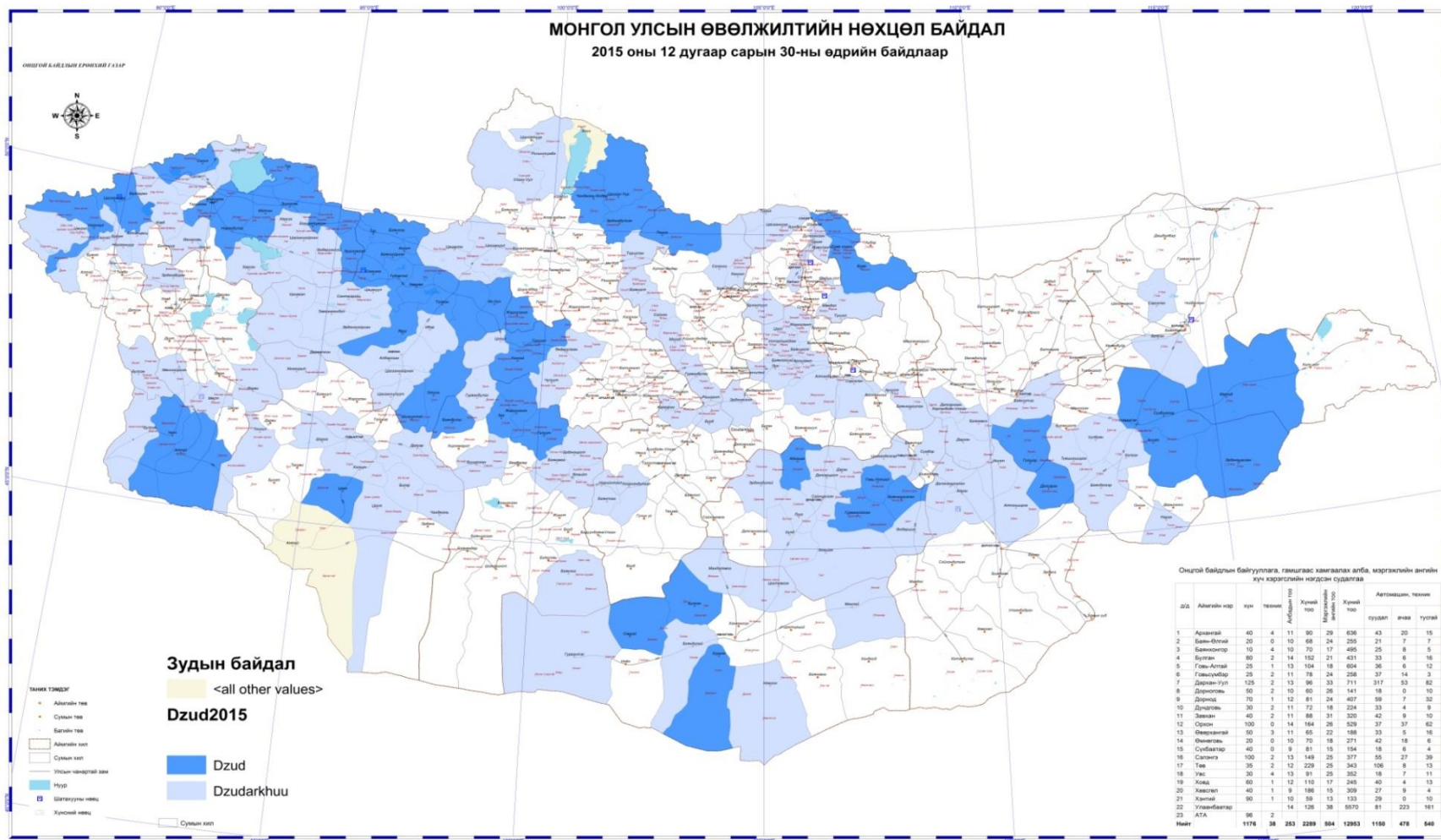




## Disaster mitigation costs in Mongolia, be type of disaster, 2004-2013, mln MNT



# Dzud and heavy snow area



# Grade of dzud risk assessment of aimags



## Conclusion

- There are series studies and statistics related with natural and human made disasters conducted by NEMA and line ministries and agencies, international organizations, NGO and INGO as well as academic institutions.
- But, there is lack of an integrated database and disaster related statistics in Mongolia.



Thank you for attention