



*Empowered lives.  
Resilient nations.*

# WORLD TSUNAMI AWARENESS DAY 2017

Strengthening Tsunami preparedness  
and awareness for school children in the  
Asia Pacific region

# Purpose of the project

Reduce the loss of lives of school children in high tsunami risk areas through better awareness and preparedness.

## Activities:

- *Collect and analyse* exposure data to identify tsunami high risk schools
- *Review, update, translate and disseminate* public education materials on tsunami response and preparedness for schools
- *Support design and conduct* of tsunami evacuation drills in schools
- *Develop visual products* (videos, blogs, photo stories) recording tsunami school drills
- *Support high level events* around World Tsunami Awareness Day through robust communications and social media
- *Develop guidelines* for replicating and scaling up tsunami evacuation drills

# Target countries

The project will be implemented in **18 countries in the Asia-Pacific region:**

- **South Asia:** Bangladesh, Maldives, Pakistan, Sri Lanka
- **SE Asia:** Cambodia, Indonesia, Malaysia, Myanmar, Philippines, Thailand, Timor-Leste, Viet Nam
- **Pacific:** Fiji, Papua New Guinea, Samoa, Solomon Islands, Tonga, Vanuatu

It is estimated that the project will be implemented in at least five schools per country i.e. 90 schools in total.



Empowered lives.  
Resilient nations.

# Project details

**Funded by:** Government of Japan

**Project duration:** 1 June 2017 to 31 May 2018

## **Project Partners:**

- UNDP BRH and Country Offices
- Embassy of Japan/ JICA at country level
- Global Centre for Disaster Statistics/ Tohoku University
- International Tsunami Information Centre (ITIC)
- Indian Ocean Tsunami Information Centre (IOTIC)
- PulseLab Jakarta
- Ministry of Education, Ministry of Disaster Management etc.
- Local authorities and NGOs
- School authorities, faculty and students



Empowered lives.  
Resilient nations.

# COLLECT AND ANALYSE EXPOSURE DATA TO IDENTIFY TSUNAMI HIGH RISK SCHOOLS

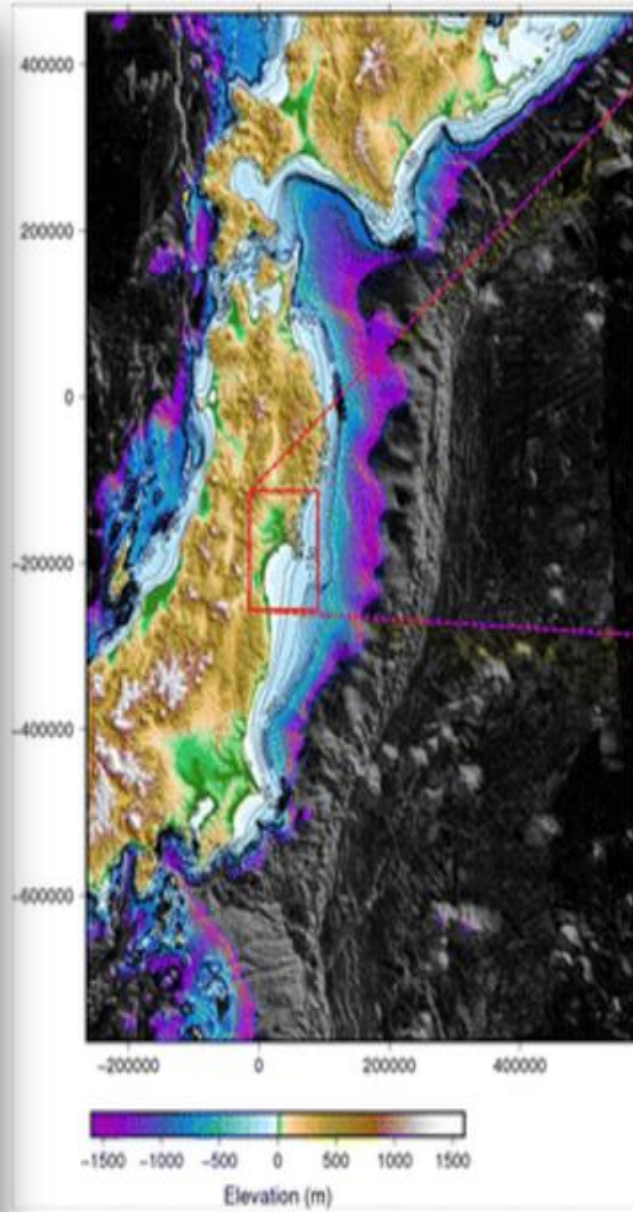
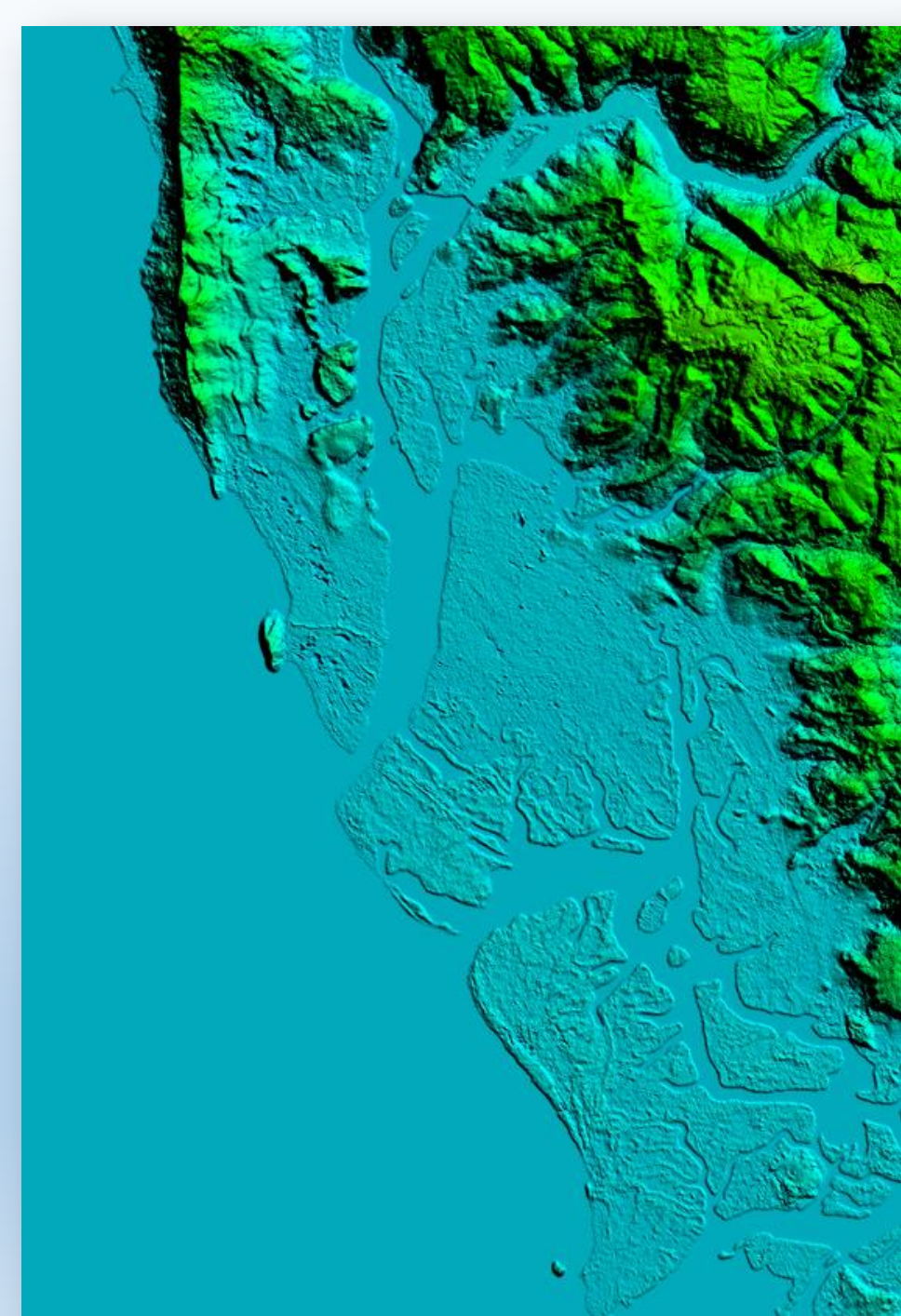
## **DATA COLLECTING:**

- Historical tsunamis
- Tsunami sources
- Bathymetry (sea depth)
- Topography (land elevation)
- Surface roughness index (land use)
- Identification of schools within the tsunami hazard area.

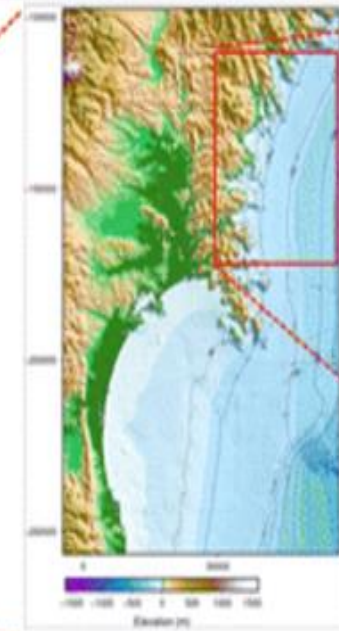
## **ANALYSIS:**

- Simulating tsunami inundation
- Making tsunami hazard map
- Investigating high hazard area





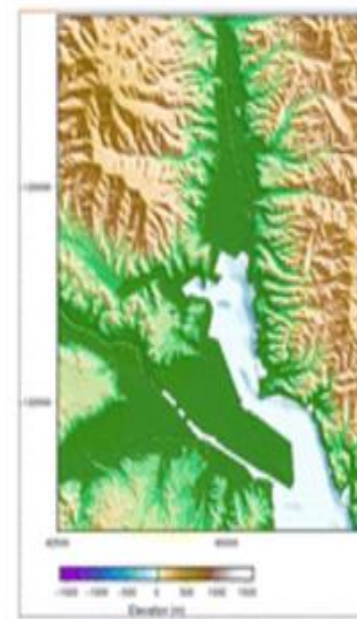
Region 1: 405m



Region 2: 135m



Region 3: 45m

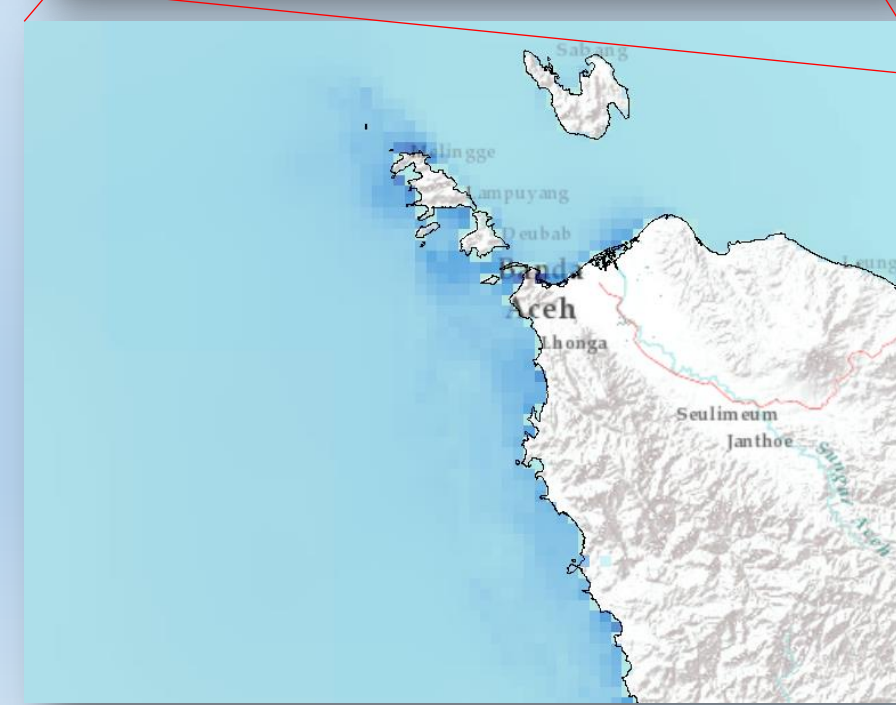
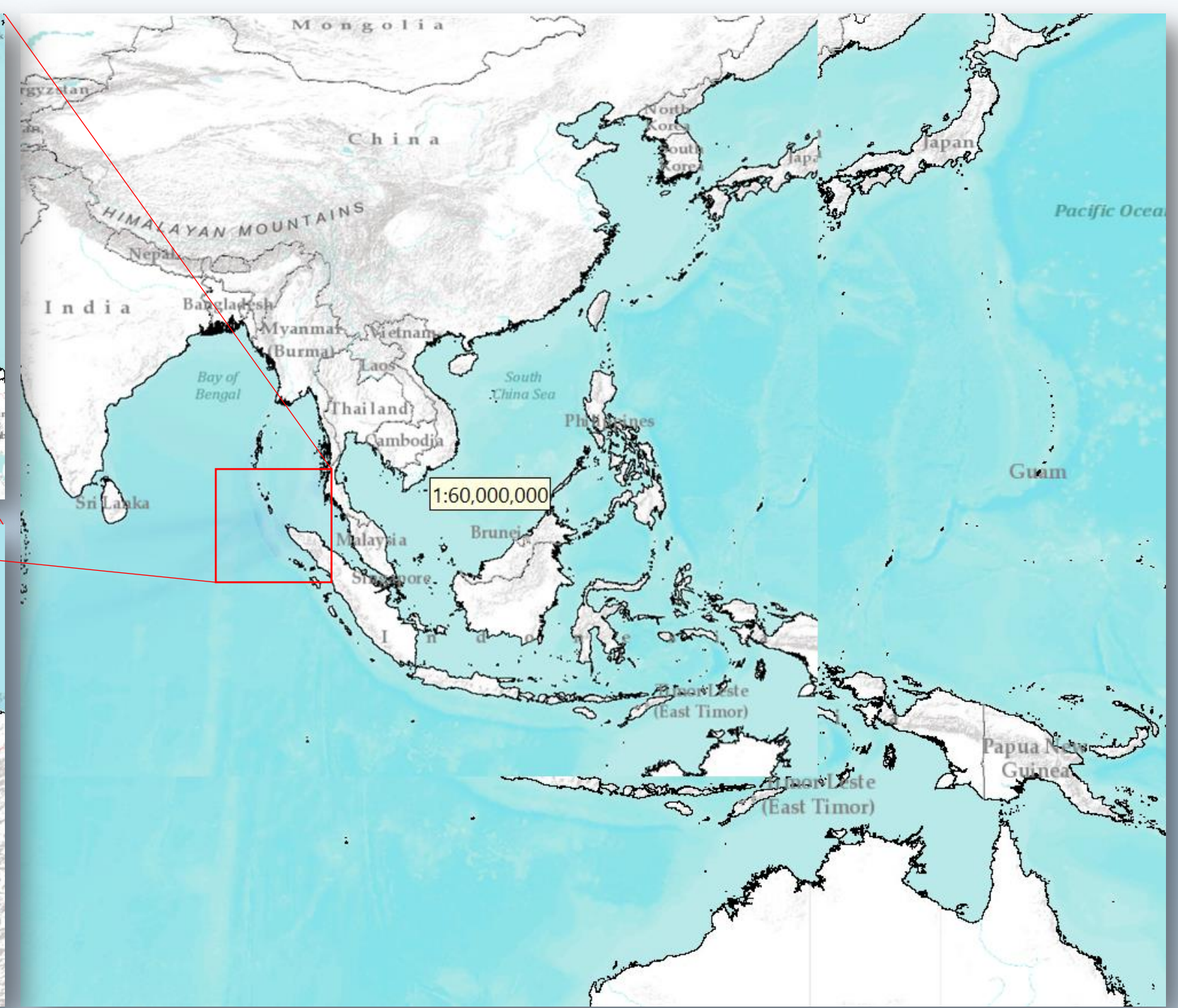
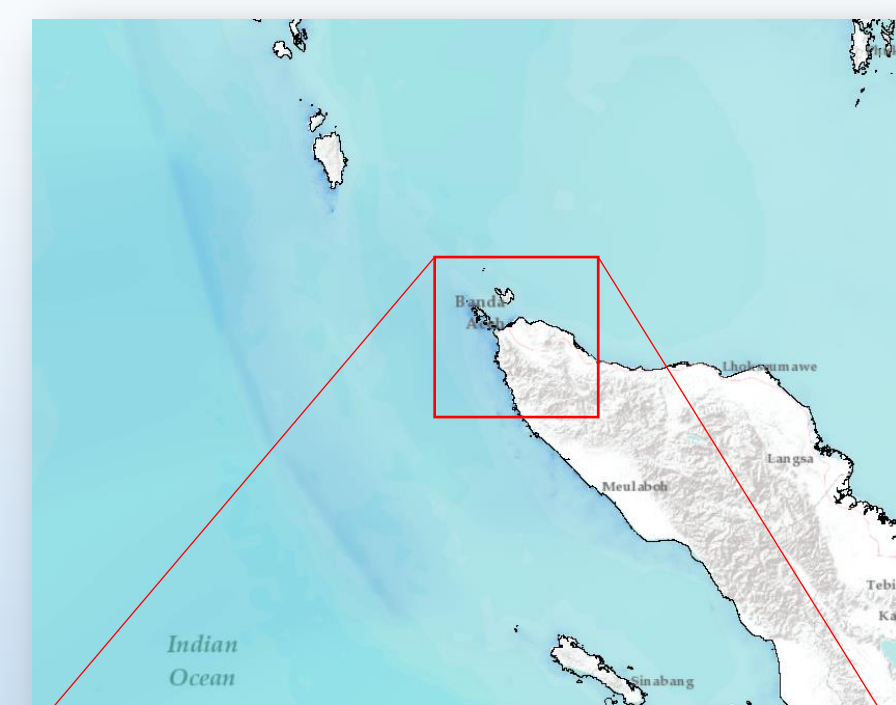


Region 5: 5m



Region 4: 15m







<http://inarisk.bnpb.go.id>

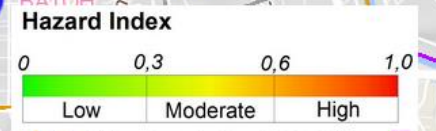
NPSN : 10105367  
[SD NEGERI 7 BANDA ACEH](#)  
 ALAMAT : Jl. Rama Setia Banda Aceh

- Satellite
- Terrain
- Road

---

- Hilshade
- Hazards of Tsunami
- Rivers 250K
- Drainage Basin
- Administrative Boundary
- Schools
- Hospitals
- Community Health Centre

<b>KOTA BANDA ACEH</b>	
<b>ASSESSMENT : Hazards</b>	
<b>DISASTER : Tsunami</b>	
<b>MODERATE AND HIGH THREAT</b>	
Number of sub-districts	5
Size hazards (hectares)	2.487





### (10105367) SD NEGERI 7 BANDA ACEH

Jl. Rama Setia Banda Aceh, Alue Deah Teungoh, Kec. Meuraxa, Kota Banda Aceh Prop. Aceh [\(master referensi\)](#)



[Detail Sekolah \(DAPODIK\) Klik Disini](#)

#### Prestasi dan Penghargaan

#### Siswa

### Siswa

Tingkat
Agama
Umur
Jenis Kelamin

Jenis Kelamin		Jumlah
<b>Total</b>		<b>112</b>
Laki-laki		61
Perempuan		51

### Siswa Mengulang

Tingkat
Umur
Jenis Kelamin

Tingkat		Jumlah
		3



*Empowered lives.  
Resilient nations.*

THANK YOU