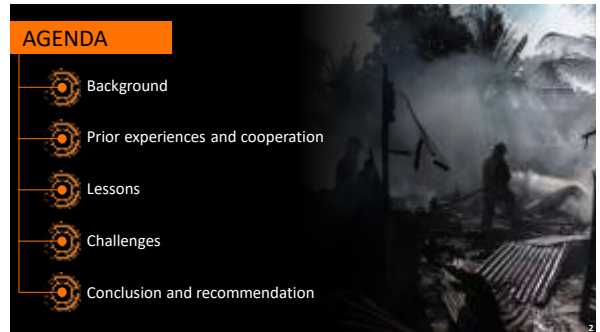
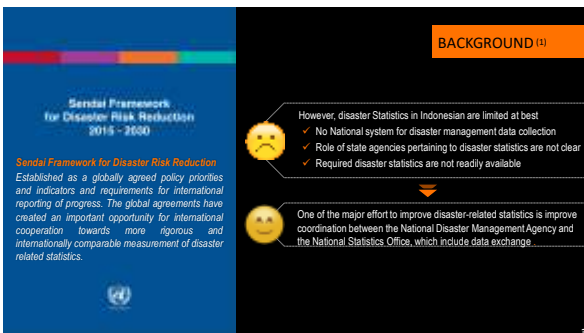




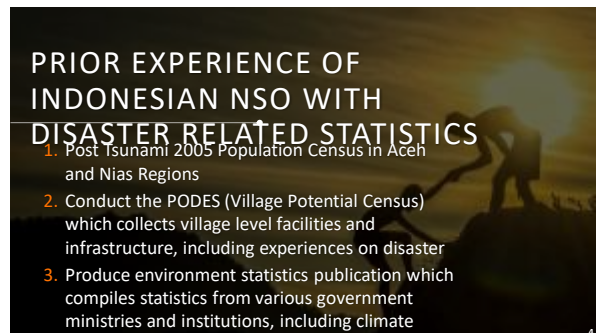
1



2



3



4

## Cooperation Between NDMA and NSO in Indonesia

### MOU (2013) and renewed in 2018

1. Integration of NSO data (2010 Population Census and 2011 PODES) with NDMA Data in a database system called DIBI (2013)
2. KAP (*knowledge, Attitude and Practice*) Disaster Readiness survey (2013)
3. Participate (in tandem) in national and international meetings related to disaster statistics

5

## LESSONS



1. Complete Data and information on disaster-related statistics is sorely needed for planning, monitoring and evaluation of aid distribution for victims of disaster, including rehabilitation and reconstruction.
2. Various ministries and institutions have made partial and individual efforts to collect disaster related data and information. However, most of these efforts are not integrated, overlapping and uncoordinated. NSO not involved to previous policy.
3. Efforts have been made to conduct an integrated survey on refugees by several institutions (NDMA, MOSA, MOH and Local Prov. Government of Central Sulawesi), supported by the armed forces of Indonesia, IOM and UNFPA. However, due to

6

## Challenges to Inter-agency Disaster-related Data Exchanges (1)



- ✘ Develop a national system of Disaster Statistics which covers:

1. Pre Disaster
2. During disaster
3. Post Disaster.

A pilot survey will be conducted in Central Sulawesi for the post disaster system in 2019.

- ✘ Inter-agency coordination is needed for the 3 systems of disaster-related statistics

7

## Challenges to Inter-agency Disaster-related Data Exchanges (2)



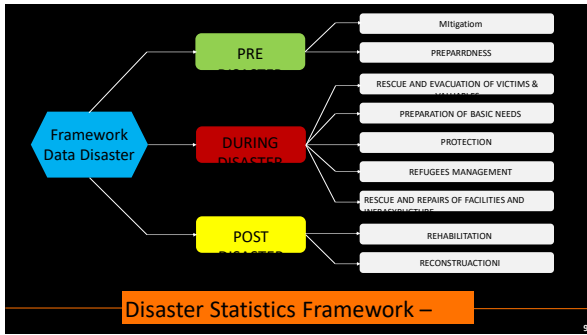
- ✘ NSO is committed to developing disaster related statistics. It is part of the quick win action plan of the current management.

- ✘ The challenge is also to have a gender disaggregated disaster-related statistics. The challenge is to obtain it from others

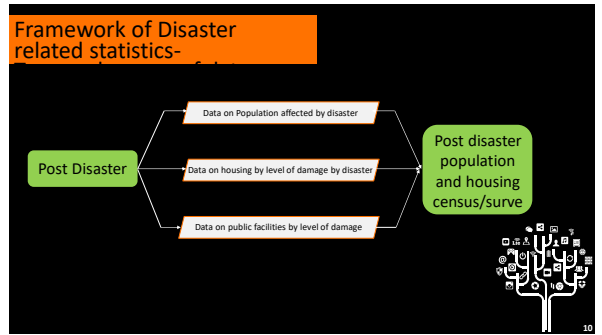
- ✘ The NSO is committed to gender disaggregated statistics, as well as by age group, urban/rural, disabilities and educational attainment.

- ✘ NSO has a special unit which compiles gender-related statistics from various institutions, periodically.

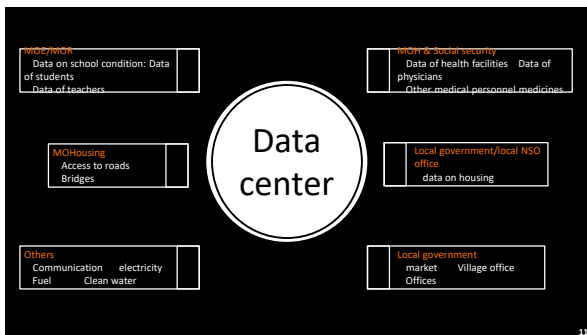
8



9



10



11

**THANK YOU**  
[www.bps.go.id](http://www.bps.go.id)

Jl. Dr. Sutomo 6-8 Jakarta 10710 | [bpsdq@bps.go.id](mailto:bpsdq@bps.go.id)

(021) 3841195, 3842508, 3810291 | Badan Pusat Statistik (Page)

BPS Statistics | @bps\_statistics

12