

6th Meeting of the Expert Group on Disaster-related Statistics

(Mis) Understanding data disaggregation

Arman Bidarbakhtnia

UNESCAP

bakhtnia@un.org

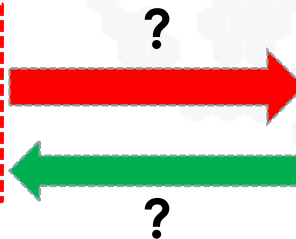
Data
disaggregation

vs

Disaggregated
Statistics

- ❑ No need to disaggregate,
Appropriately aggregate!

Disaggregate



Understand
people



difference?



Equal income of USD1.8 per day

difference?

- All equally poor
- All may be **Deprived** from basic needs, **But**
- Differently **vulnerable**, some more than others
- Different abilities in responding to undesirable changes
- Different **characteristics**, different **issues**
- Need different policy support

Equal income of
USD1.8 per day

Statistics Division

<http://www.unescap.org/our-work/statistics>

Leaving no “Who” behind?

1 Hard to reach

Sub-groups of population that are difficult to target for a variety of reasons such as being small (in the minority) or having specific characteristics such as illness, occupation, etc.

2 Hidden population

When public acknowledgement of the population is potentially threatening for the members of the sub-group. Size of these population groups is often unknown and strict privacy issues are a concern in identifying them.

3 Excluded, marginalized, discriminated

Though the three groups are different, all share the same characteristic, they are often “known” but “ignored” in one way or another. Examples: certain ethnic groups, certain age groups, sex, occupation, religious minority groups.

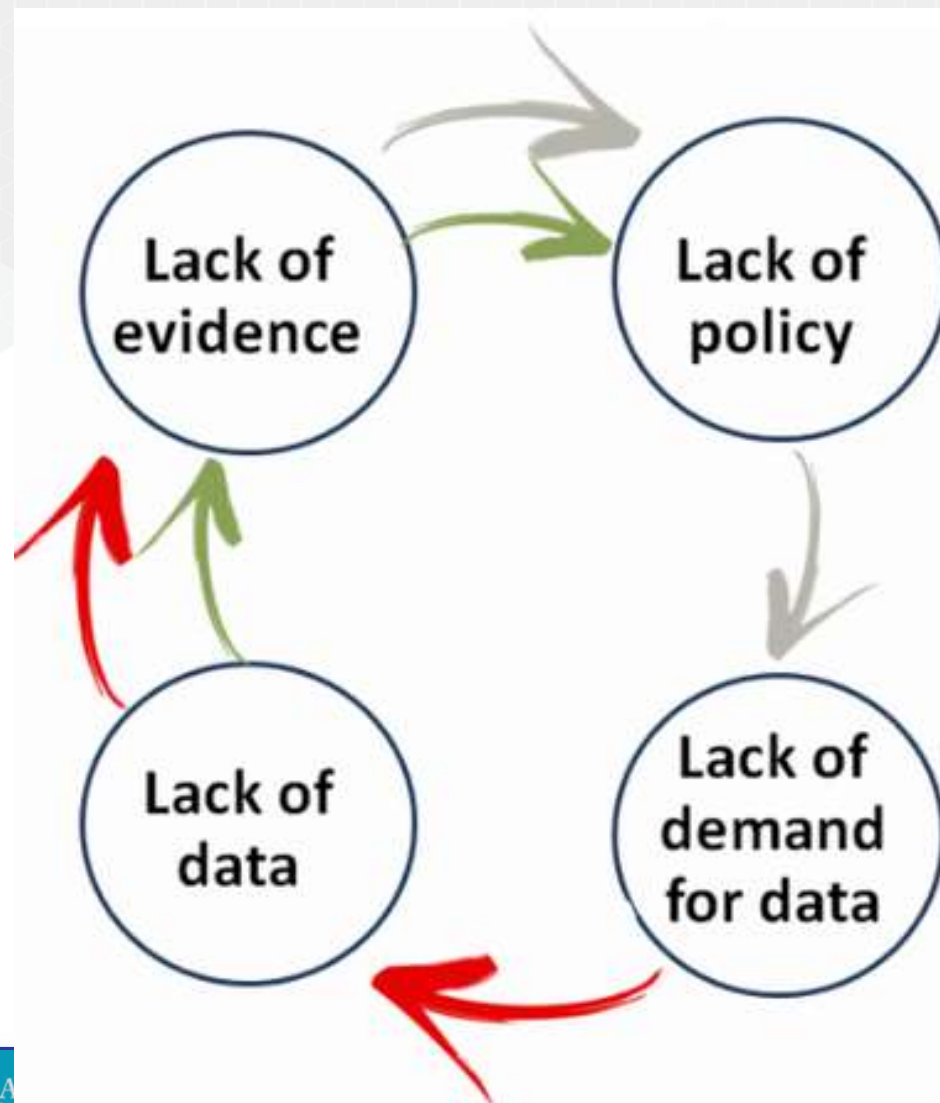
4 Vulnerable sub-population groups

A sub-group that is potentially in a disadvantaged position due to its socio-economic situation. Examples: uninsured, low income, slum, or elderly groups.

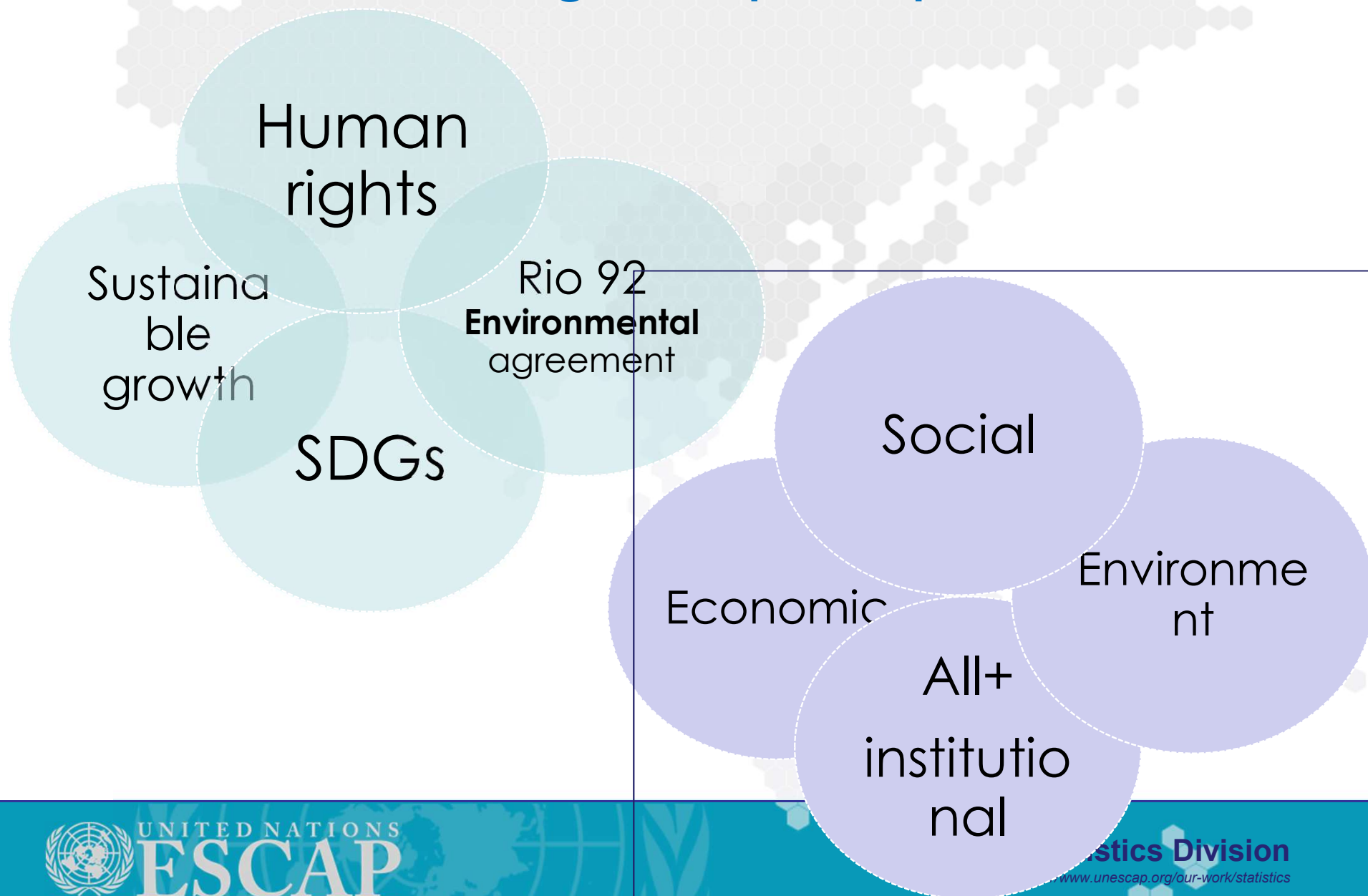
5 Geographically disadvantaged

Sub-populations that live in an unfortunate situation due to geographical conditions such as harsh climate, remote and hard to access locations, poor infrastructure.

How do we know?



Dealmakers: Agreed principles



UNITED NATIONS
ESCAP

Economic and Social Commission for Asia and the Pacific

Statistics Division

www.unescap.org/our-work/statistics

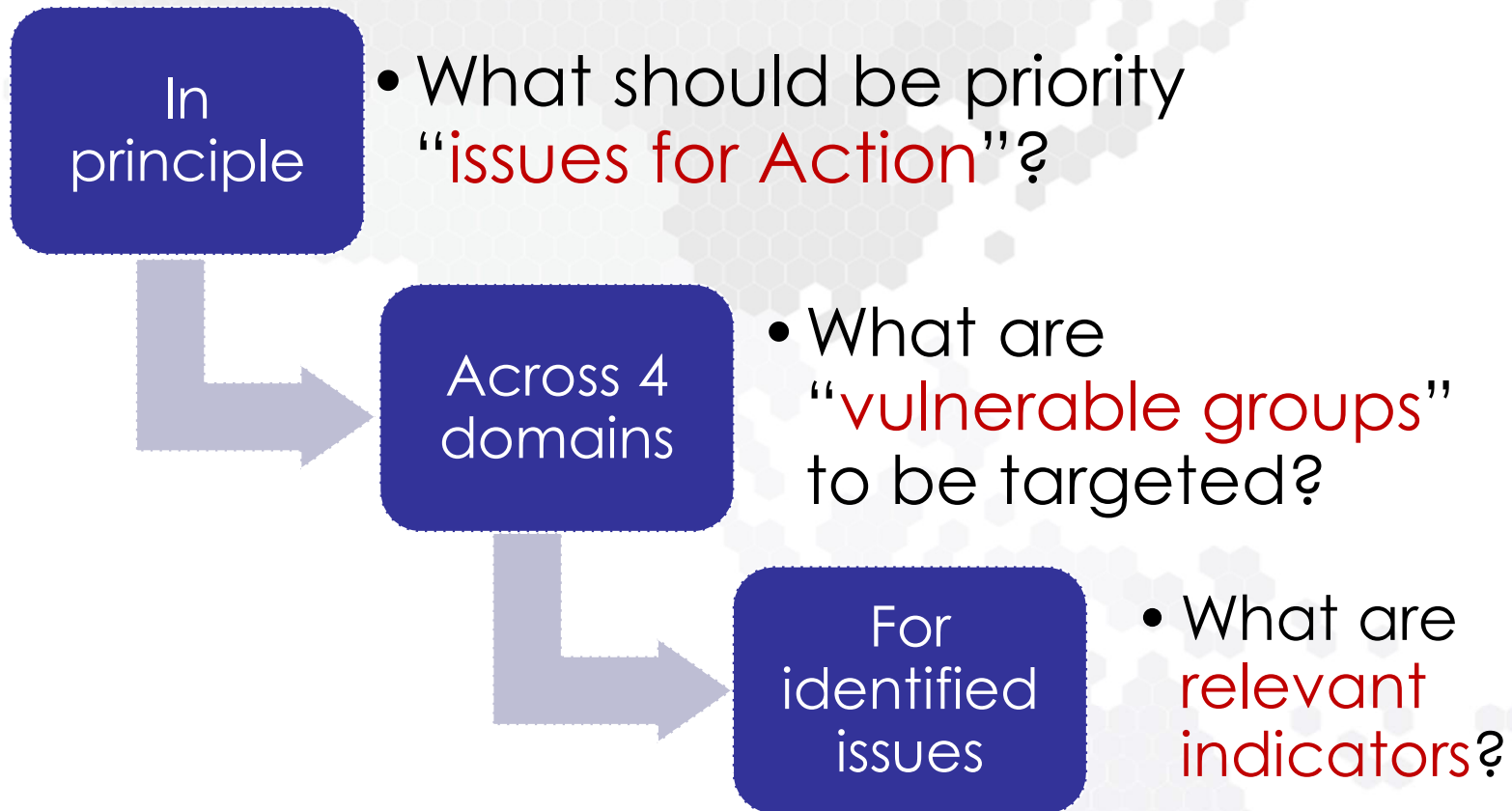
EPIC: Every Policy is Connected



Drawing on the agreed principles, rather than endorsed policies..

EPIC is a generic tool that facilitates cooperative, principle-based policy-data integration

EPIC: Every Policy is Connected



References

[Bidarbakht-Nia, A., 2018; "Policy-Data Integration: key to achieving the SDGs for all", UNESCAP, Working Paper Series \(SD/WP/07/April 2017\).](#)

[EPIC: a generic tool for policy-data integration](#)

[Connecting policymakers and data producers](#)



THANK YOU!



UNITED NATIONS
ESCAP

Economic and Social Commission for Asia and the Pacific

Statistics Division

<http://www.unescap.org/our-work/statistics>