


6th EGM on Disaster-Related Statistic Framework

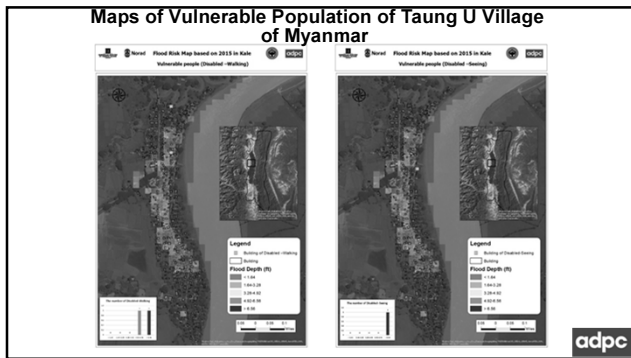
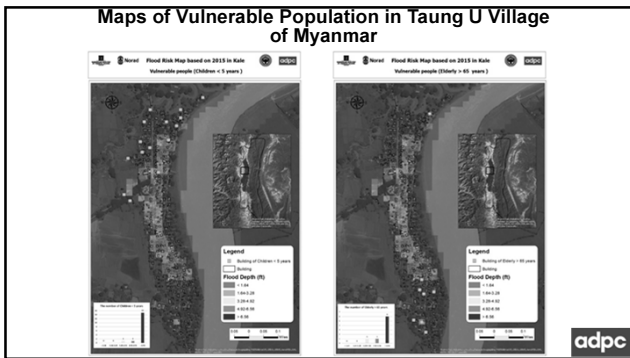

Needs for disaster-related statistic data & capacity development
(experience sharing)

Bangkok, 25 May 2019
(dewi@adpc.net)



Experience Sharing:

1. Myanmar
(Department of Disaster Management)
2. Philippines
(Office of Civil Defense)



Applicability in “Real Operations”

- ❑ Prioritized the area for the decision makers (Search and Rescue Operation, Setting up the Temporary Evacuation Shelters)
- ❑ Stockpiling the relief Items
- ❑ The collected data can be applied not only for the disaster preparedness plan but also the risk-sensitive development plan especially in the hazard prone areas.

Way Forward

- ❑ Try to expand to the other hot-spots area for flood (other flood prone areas)
- ❑ Try to setup the database for the disaster exposure data



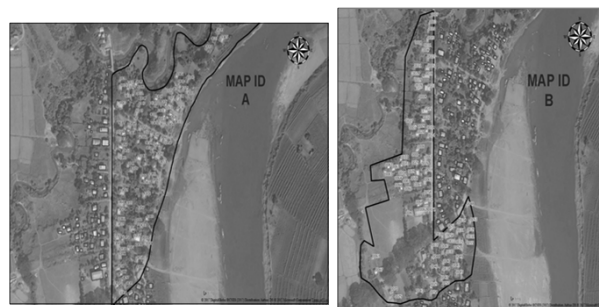
Training & Capacity Building



- ❖ Kale is well known for the nationwide flood in 2015 and it was severely affected by the flood
- ❖ Geographic Position of Kale
 - ❖ Located along with Myit Thar River
 - ❖ Low elevation area at the footage of the Chin Mountain Ranges,
- ❖ Taung U village of Kale, located at the curve of Myit Thar River
- ❖ Riverine flood together with River bank erosion



Building footprint data collection using remote sensing- satellite imageries





Developing Building Survey Questionnaire Form

The form is titled 'Building Survey Questionnaire for Risk Assessment in Urban, Informal, Slums' and is dated 2017. It is divided into several sections:

- Part 1: Demographic Information** - Includes fields for Name of the Survey, Date of the Survey, and a table for household members.
- Part 2: Building Characteristics** - Includes fields for Building Name, Type, and a table for building details.
- Part 3: Occupancy** - Includes a table for household members and their activities.
- Part 4: Disaster Preparedness** - Includes a table for disaster preparedness measures.
- Part 5: Coping Capacity - Informal (for Informal Level)** - Includes a table for coping capacity measures.
- Part 6: Coping Capacity - Formal (for Formal Level)** - Includes a table for coping capacity measures.

Building Resilience through Inclusive and Climate-Adaptive Disaster Risk Reduction in Asia-Pacific (BRDR) (On-going Programme)

The banner features a background image of a cityscape under a cloudy sky. Below the title, the countries **Philippines**, **Nepal**, and **Papua New Guinea** are listed. At the bottom, logos for ADPC, Asian Disaster Preparedness Center, Swedish Civil Contingencies Agency, SEI Stockholm Environment Institute, and RAUOL WALLENBERG INSTITUTE are displayed, along with the text 'Supported by: Sweden Sverige'.

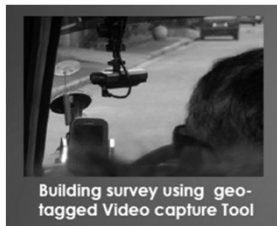
Gender and Human-Right Integrated Risk Assessment

The banner features a background image of a damaged building. Below the title, the text 'REDAS 2.0 Rapid Earthquake Damage Assessment System' is displayed. To the right, a list of bullet points describes the approach:

- Include gender and right-based approach in the development process and its application
- Will train and engage Local Government Unit (LGUs) in collecting the Exposure Database - population exposed to primary hazards (targeted up to household level data aggregated into Sex, Age, Disability / SADD)

Logos for PHIVOLCS - DOST, Department of Science and Technology, and Mines and Geosciences Bureau are shown at the bottom, along with the ADPC logo.

Developing Exposure Database using Individual Building Survey by Local Government Units



Building survey using geo-tagged Video capture Tool



Replay of geo-tagged Video of buildings with position of observer shown on Google map

adpc

A question to the Expert Group :

Whether it is too ambitious to have this type of georeferenced household-level data to be included in the disaster-related statistic framework ?

adpc



adpc