

FMS Annual National
Symposium, and

10th Regional Meeting
of UN ESCAP TWG on
Disaster Statistics for
Asia and the Pacific

ASIA PACIFIC REGIONAL SYMPOSIUM ON DISASTER-RELATED STATISTICS

Online - Tuesday, 27 July 2021

A Proposal

Background



PROGRESS OF INDONESIA ONE DISASTER DATA

Considerable strides in developing a national statistical framework for disaster-related data to be part of the official statistics



ASIA PACIFIC REGIONAL FIVE-YEAR PLAN

ESCAP TWG has been leading the regional level conversations among members and connecting them to the global processes



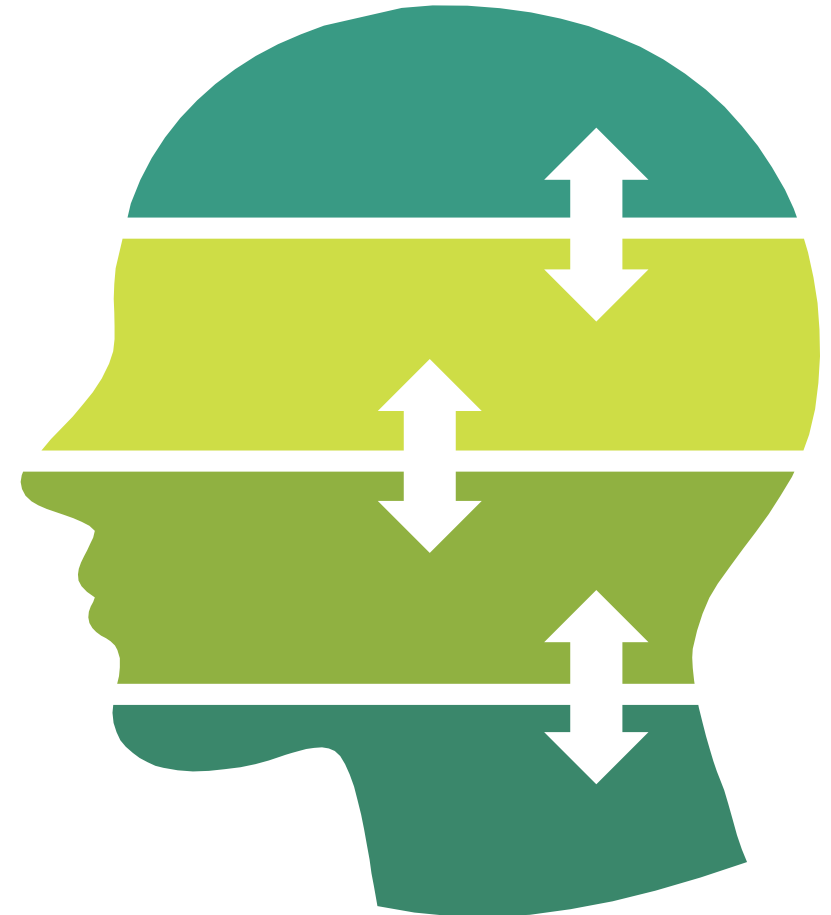
GLOBAL MOMENTUM FROM THE INTER AGENCY EXPERT GROUP

The first Global Forum of disaster statistics producers and users has set the purpose, objectives and way forward towards internationally-agreed standards

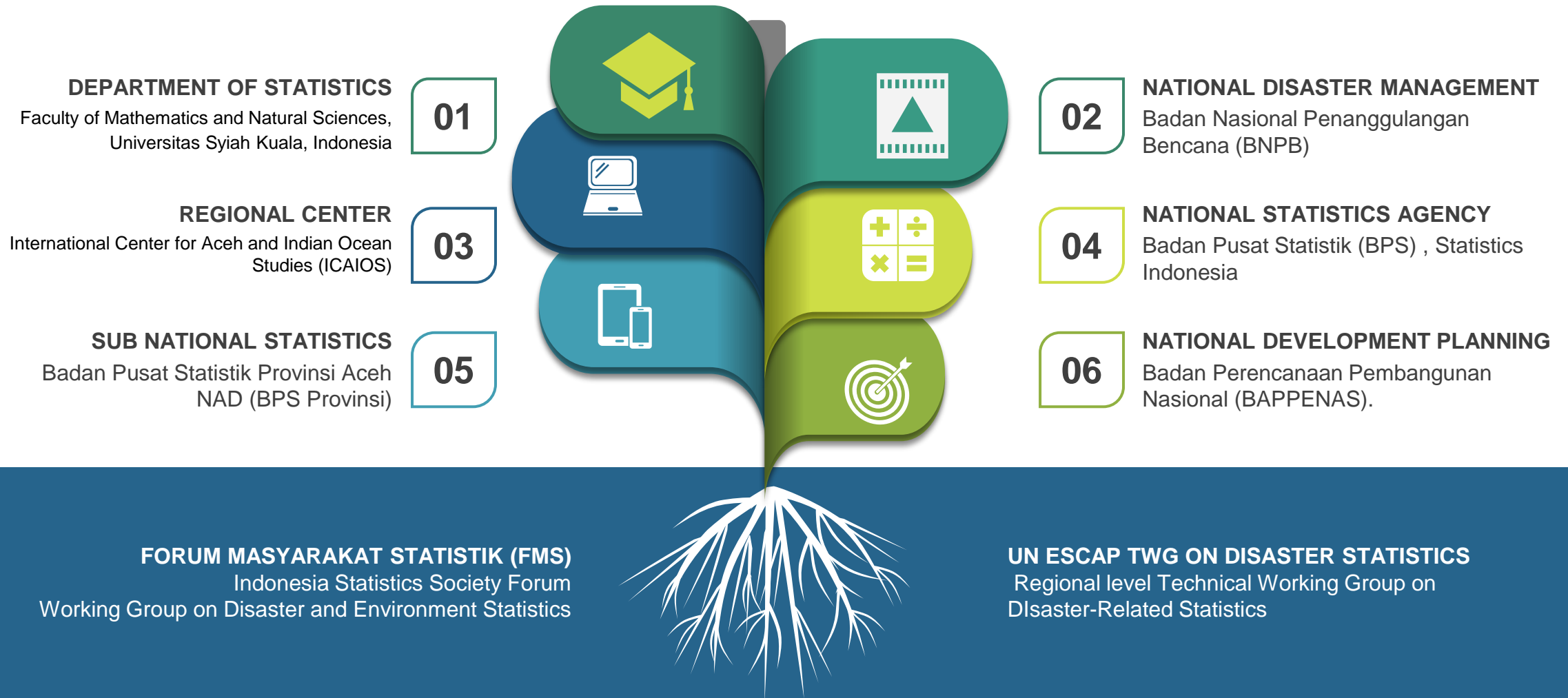


And thus the need for a regional avenue to take stock and build momentum

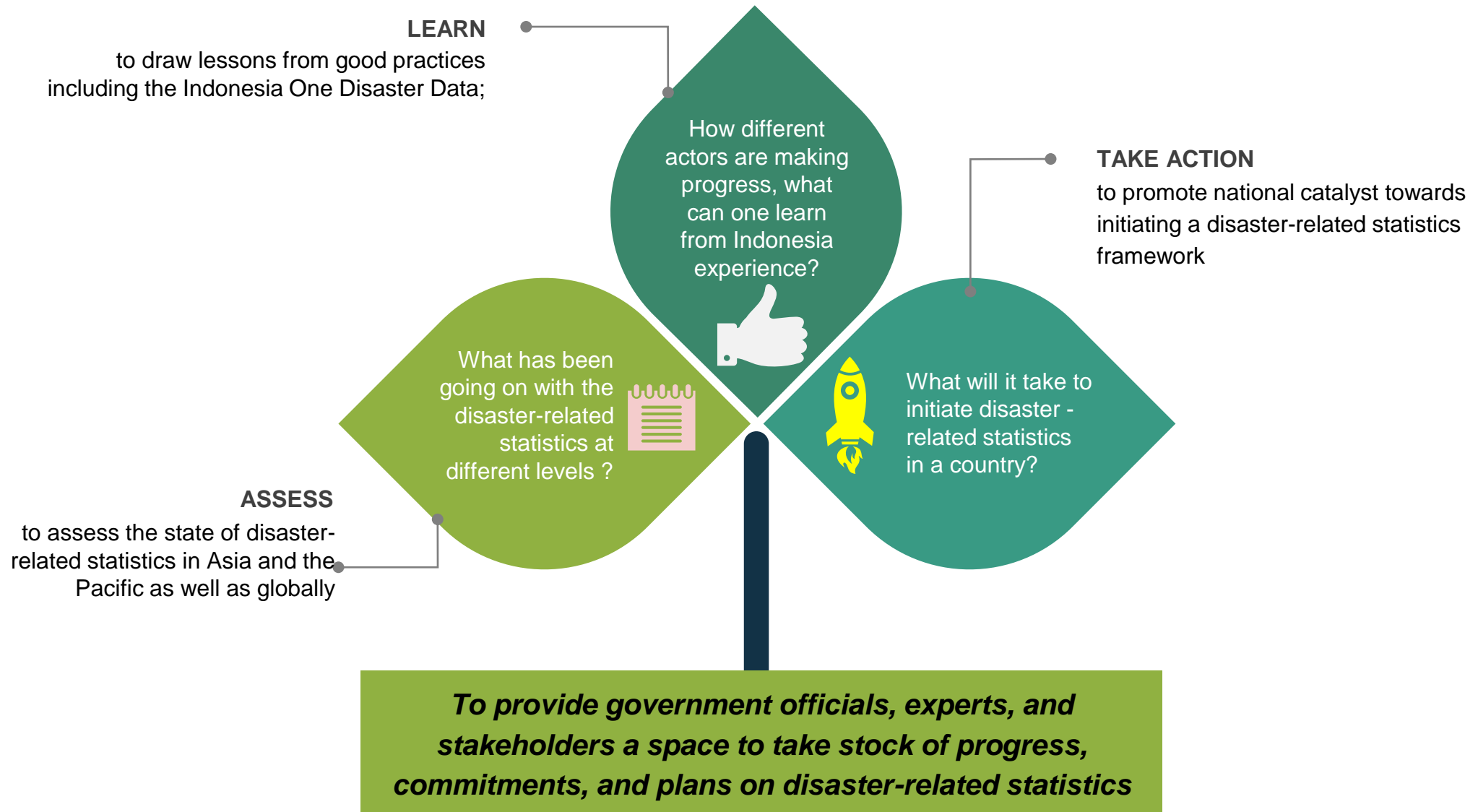
Leveraging progress at the different levels to build the momentum for Asia Pacific countries towards initiating and sustaining efforts towards establishing disaster-related statistics



Regional Symposium Stakeholders



Result Framework



Proposed Programme

OPENING SEGMENT



Prof. Dr. Khairul Munadi, ST., M.Eng,

Chairman, Tsunami and Disaster Mitigation Research Center (TDMRC), Indonesia's Center of Excellence for Research on Disaster, Universitas Syiah Kuala,



Ms. Rikke Hansen

Chief, Economic and Environment Statistics, UN ESCAP, Co-Chairperson of the Inter-Agency and Expert Group (IAEG) on Disaster-related Statistics



Keynote speech: Prof. Dr. Ir. Bustanul Arifin, M. Sc., Professor of Agricultural Economics in the University of Lampung, and Chairman of the Forum Masyarakat Statistik / Indonesian Statistical Society Forum



FORWARD MOMENTUM

Global Level: Mr. Animesh Kumar,

(Forward agenda of the Inter-agency Expert Group)

Head of the UNDRR Office in Bonn, Global facility for climate action and coherence, disaster data and monitoring, and Co-Chairperson of the Inter-Agency and Expert Group (IAEG) on Disaster-related Statistics



Regional Level: Col. Ariunaa Chandrabal,

Head, Cooperation Division, NEMA Mongolia, Chairperson, UN ESCAP TWG on Disaster-Related Statistics (*Five year Asia-Pacific regional work plan*)



Country Level:

What will it take to embark on disaster -related statistics?

- **Vanuatu: Mr. Calo Andy Kap,** Government Statistician. Vanuatu National Statistics Office
- **Turkey: Ms. Yeliz Teker,** Geological Engineer (PhD), Disaster and Emergency Management Authority (AFAD) Planning and Risk Reduction Department
- **Malaysia: Ms. Che Siti Noor Binti Koh. Poh Lee.** Principal Assistant Director, Mitigation Division, National Disaster Management Agency



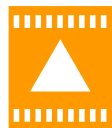
ACADEMIC SEGMENT

1. **Prof. Dr. D.S. Priyarsono, M.S,** Faculty of Economics and Management, Bogor Agricultural University
2. **Dr. Sri Astuti Thamrin, S.Si., M.Stat.,** Head of Statistics Laboratory di Universitas Hasanuddin
3. **Saiful Mahdi, Ph.D,** Department of Statistics, Universitas Syiah Kuala

Special features on Indonesia One Disaster Data

- **Harmawanti Marhaeni,** Director Social Statistics, Statistics Indonesia
- **Richard Makalew,** Programme Specialist, UNFPA Indonesia
- **Puji Pujiono,** Chair, WG on Disaster and Environment Statistics, Forum Masyarakat Statistik
- **Statistics Institute of Asia - Pacific (SIAP):** Launching of DRSF E-Learning Course in Bahasa

SUBSTANTIVE SEGMENT



Dr. Raditya Jati, S.Si., M.Si

Deputy for System and Strategy, National Disaster Management Agency (*The imperatives for a national policy on disaster-related statistics*)



Dr. Ateng Hartono, SE, M.Si. ,

Deputy for Social Statistics, Statistics Indonesia (*Required data ecosystem to integrate disaster data into a national statistical system*)

Amalia Adininggar Widyasanti, ST, MSi, M.Eng. Ph.D,

Deputy for Economy, Ministry / Agency for National Development Planning (*Making disaster risks count: how disaster make or break SDGs*)



The background of the slide is a repeating pattern of watercolor-style green leaves and branches. The leaves are in various shades of green, from light and pale to dark and vibrant. The branches are thin and dark green. The overall effect is a soft, natural, and fresh aesthetic.

THANK YOU

Insert the Subtitle of Your Presentation