



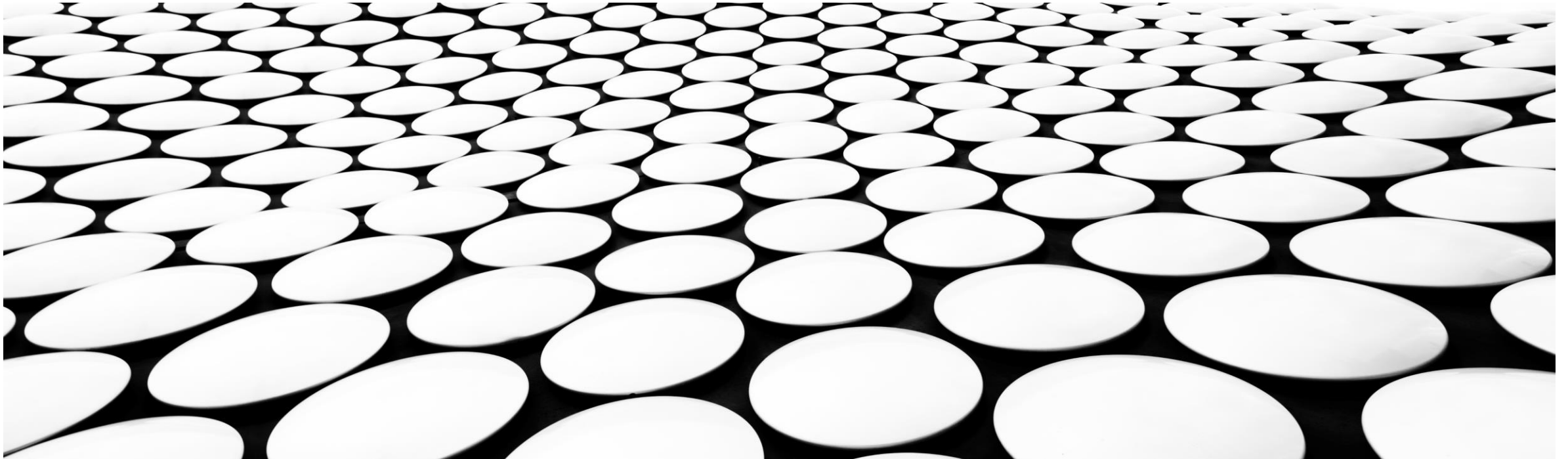
National Emergency
Management Agency



National Statistics
Office of Mongolia

DISASTER RELATED STATISTICS FRAMEWORK

MONGOLIA



DISASTER RISK DATABASE



ОНЦГОЙ БАЙДЛЫН ЕРӨНХИЙ ГАЗАР
ГАМШГИЙН ЭРСДЭЛИЙН
МЭДЭЭЛЛИЙН САН

119, 11 32 5726



ЭРХ ЗҮЙ, БОДЛОГЫН
БАРИМТ БИЧИГ

ГАМШИГИЙН ЭРСДЭЛИЙГ
БУУРУУЛАХ ЗӨВЛӨЛ

МЭРГЭЖЛИЙН
ЗӨВЛӨЛ

СЕНДАЙН ҮЙЛ
АЖИЛЛАГААНЫ ХҮРЭЭ

ЭРСДЭЛИЙН
ҮНЭЛГЭЭ

МЭДЭЭ
МЭДЭЭЛЭЛ

НЭВТРЭХ

Голууд үерийн түвшинг 5-50 см даван хүчтэй үерлэж байна ▶ Ихэнх нутгаар хурц нартай, аагим халуун өдрүүд үргэлжилж, нутги

Risk database

Spatial database

Digital atlas

Risk assessment



EN

ГАЗАР ХӨДЛӨЛТИЙН ТАЛААРХ МЭДЭЭЛЭЛ



Газар хөдлөлтийн хүч
Магнитуд



Газарзүйн байршил
Өргөрөг, Уртраг



Гамшиг болсон хугацаа
Улаанбаатарын цагаар

2023-01-18

ЦАГ АГААР



Нартай

Үзэгдэл



1 м/с

Салхи



17c

Температур

EXPOSURE OF LAND AND INFRASTRUCTURE BY HAZARD TYPE

Disaster type

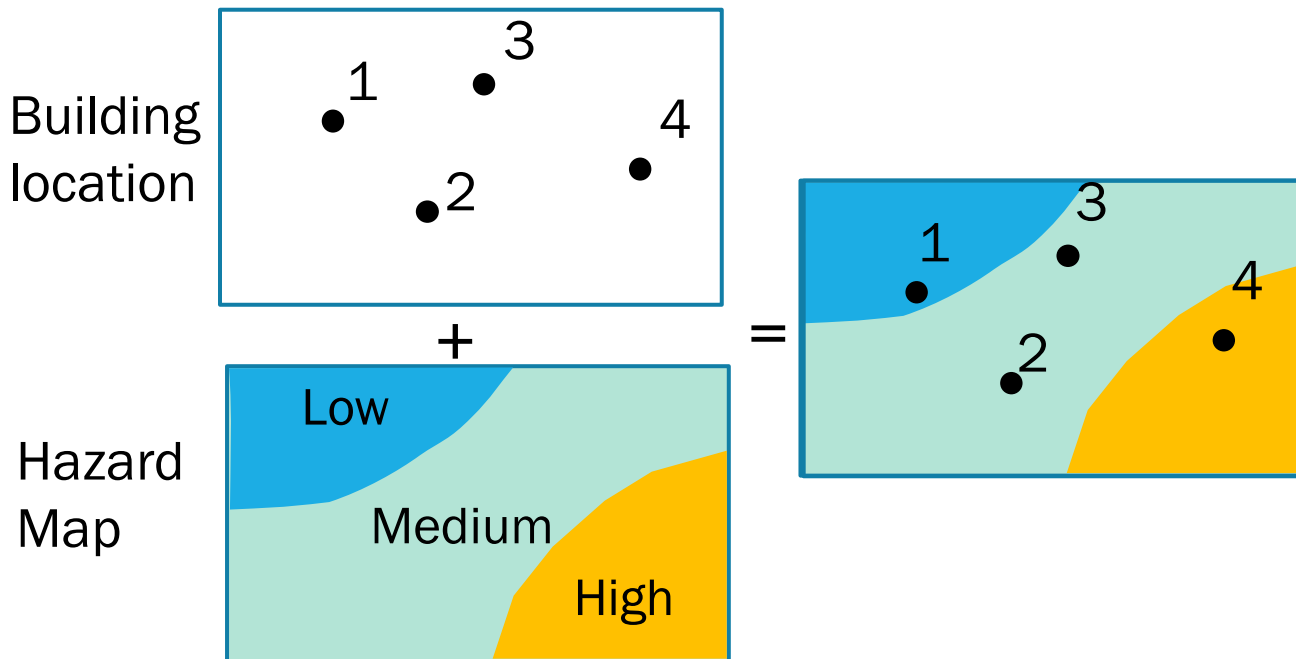
- Drought
- Dzud /winter disaster/
- Dust storm
- Earthquake
- Flood
- Lightning
- Snow storm
- Forest and steppe fires
- Zoonotic disease

Element

- Territory
- Education facilities
- Health facilities
- Gas station
- Roads
- ICT equipment
- Warehouse
- Auto and railway station
- Electricity and heat generation facilities
- Railway
- Monuments
- Electricity grids
- Mining
- Entities
- Livestock

EXPOSURE ASSESSMENT METHODOLOGY

- Overlap hazard map
- ARGIS
- MS Excel



Attribute of the facility layer

F-ID	F-Name	F-Type	...	Hazard index
1		School		Low
2		Hospital		Medium
3		Hospital		Medium
4		Ambulatory		High

DISASTER RELATED DATA SOURCE

Responsible agencies for data source



- National Statistics Office of Mongolia
 - Population disaggregated data
 - Housing/Buildings
 - Agriculture land area
- Ministry of Road and Transport development
- Ministry of Digital Development and Communications
- Ministry of Energy



- Information and Research Institute of Meteorology, Hydrology and Environment



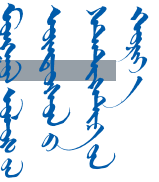
- Institute of Astronomy and geophysics



- Veterinary and Animal Breeding Agency of Mongolia



- Ministry of Food and Light Industry



Current situation of Population and HH Mongolia

LEGAL BASE

- Law of Statistics.
- Law of General Authority and State Registration.
- Law of Civil Registration.
- Law of Family.

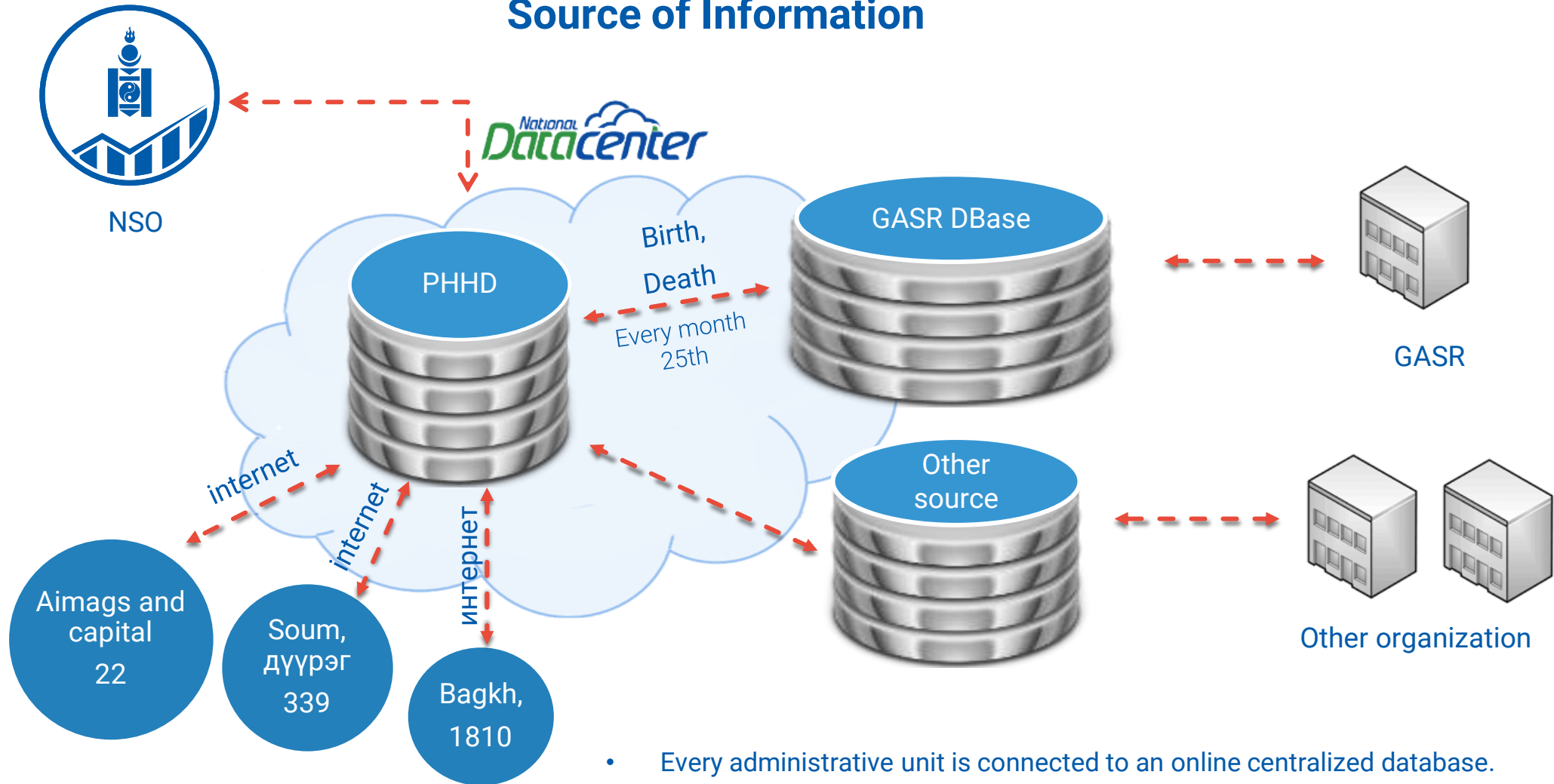
The National Statistics Office disseminated population and household statistics on an annual basis, while the Population and Housing Census is conducted every 10 years.



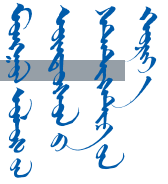


Population and HH database

Source of Information



- Every administrative unit is connected to an online centralized database.
- Can control every migration



VITAL STATISTICS



National
Statistics
Office

Vital Statistic



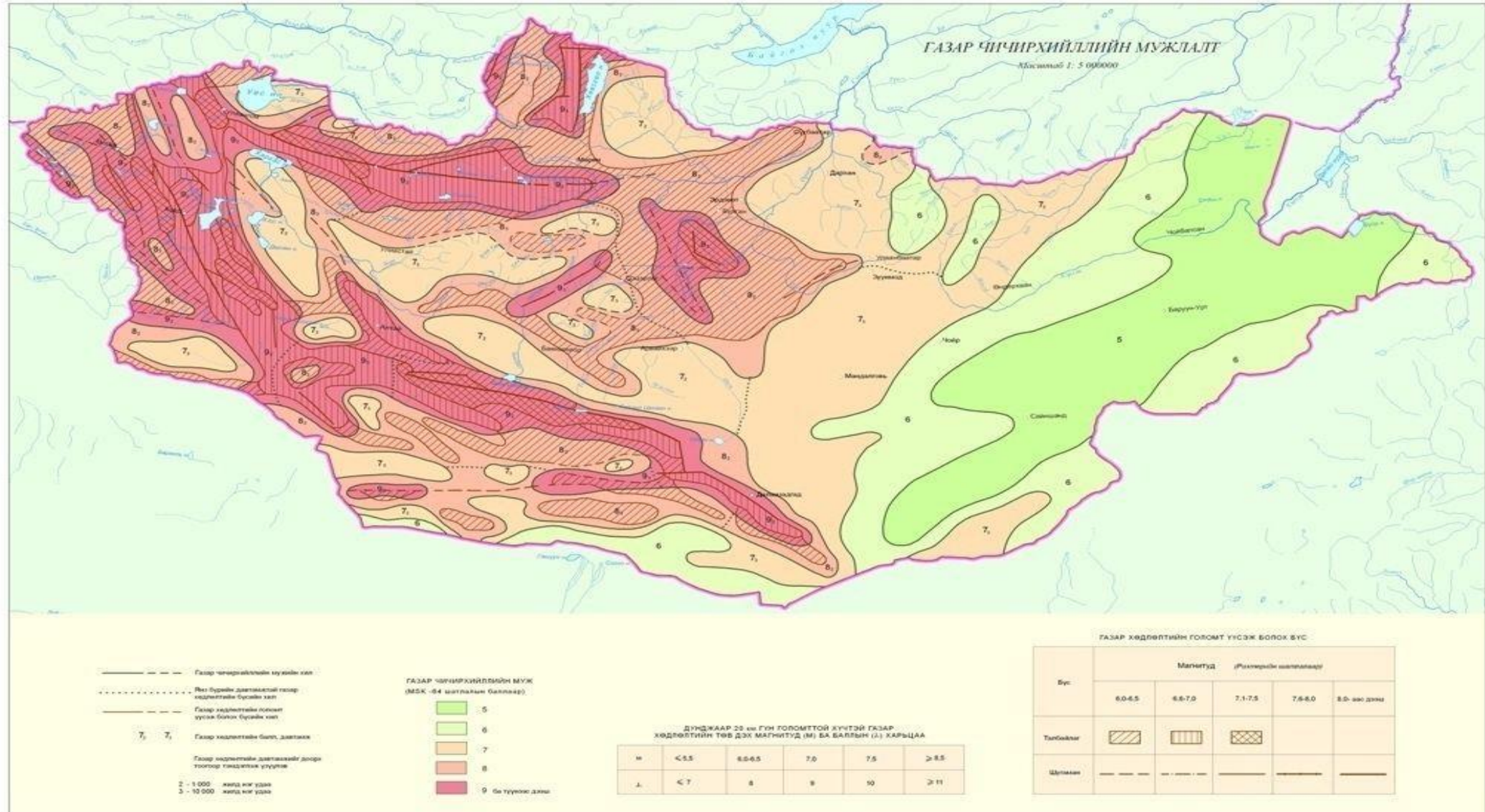
- ✓ Birth
- ✓ Death
- ✓ Marital status
- ✓ Divorce
- ✓ Adopt



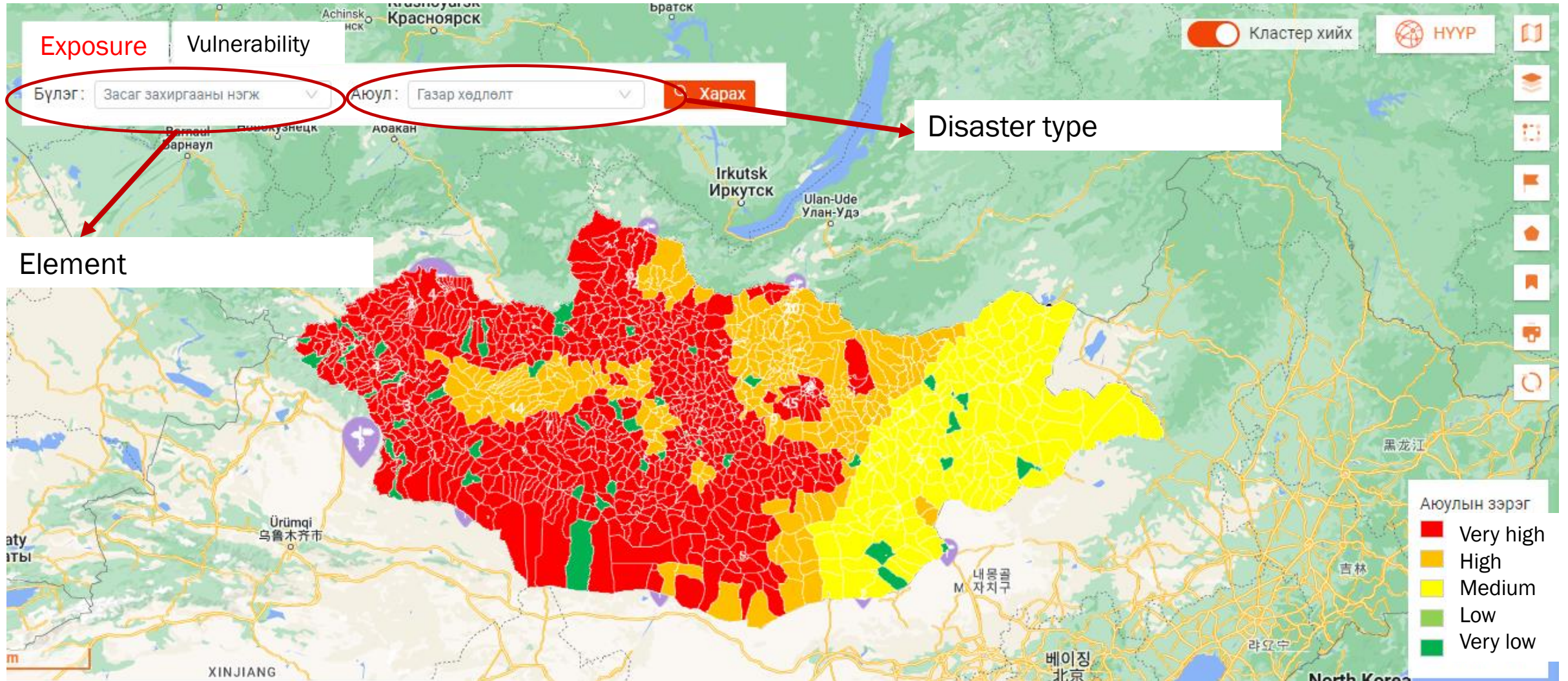
General Authority of
State Registration

Nowadays, vital statistics collected data from civil registration database of the GASR through the "XYP" system.

EARTHQUAKE HAZARD MAP



EARTHQUAKE EXPOSURE MAP /BAG LEVEL/

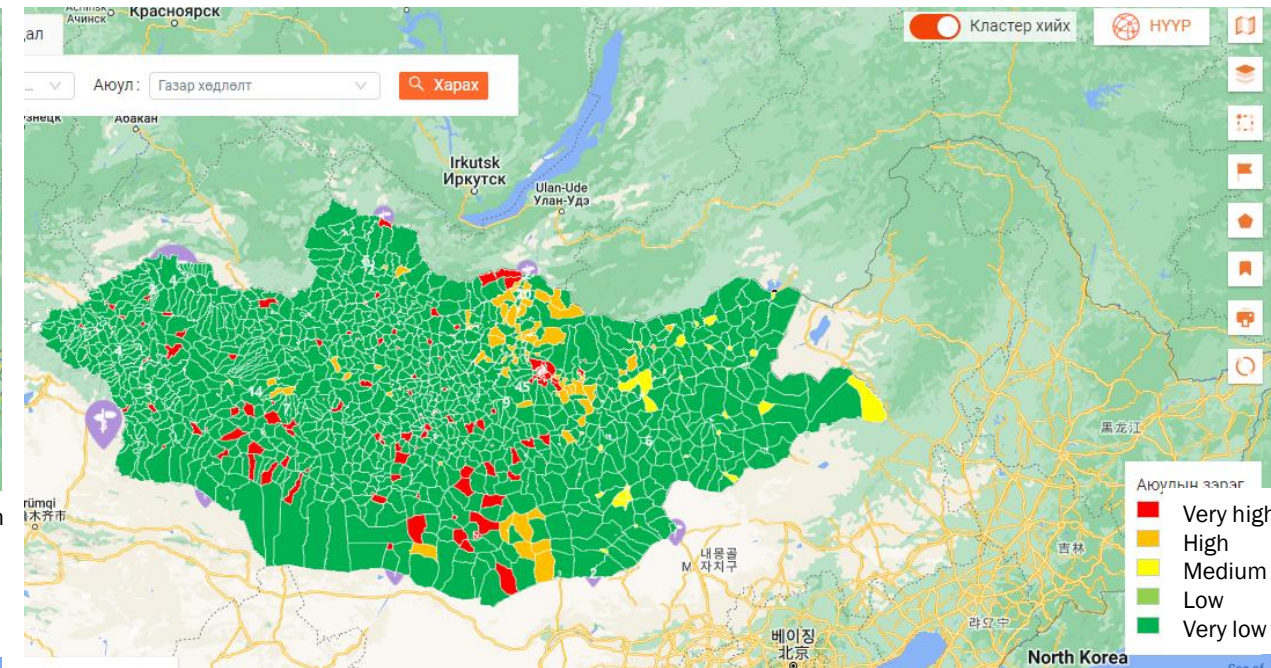
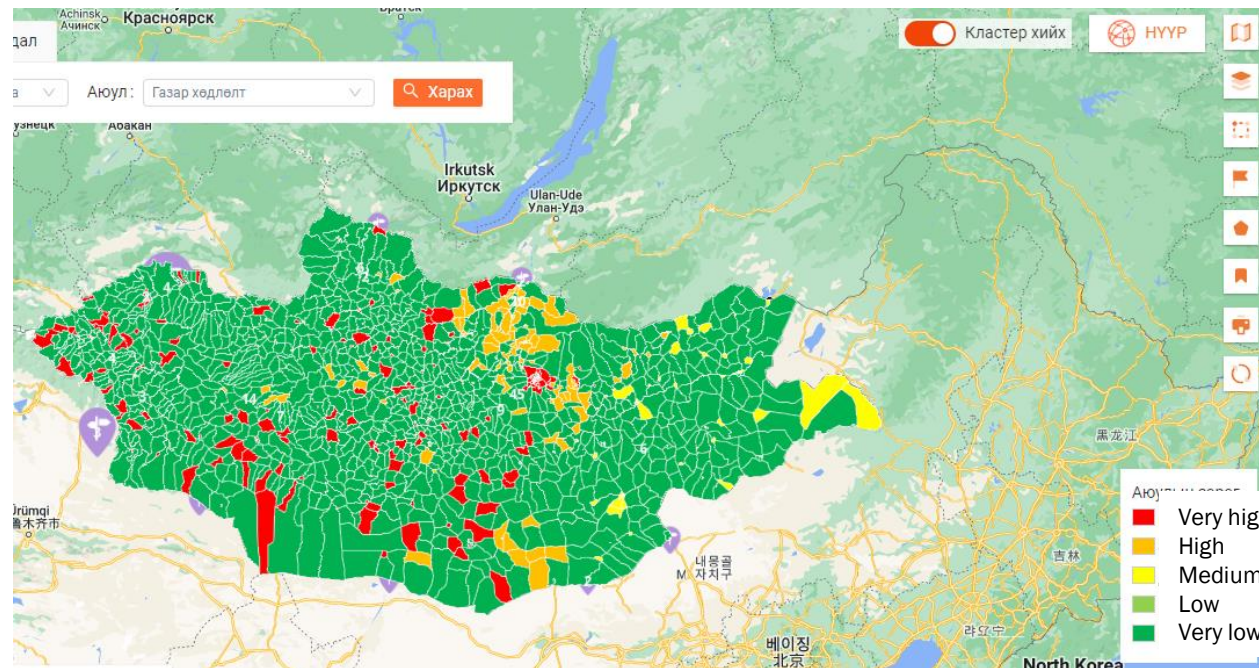


EARTHQUAKE EXPOSURE MAP / EDUCATION AND HEALTH FACILITIES /

Mappings are not completed

Education facilities

Health facilities

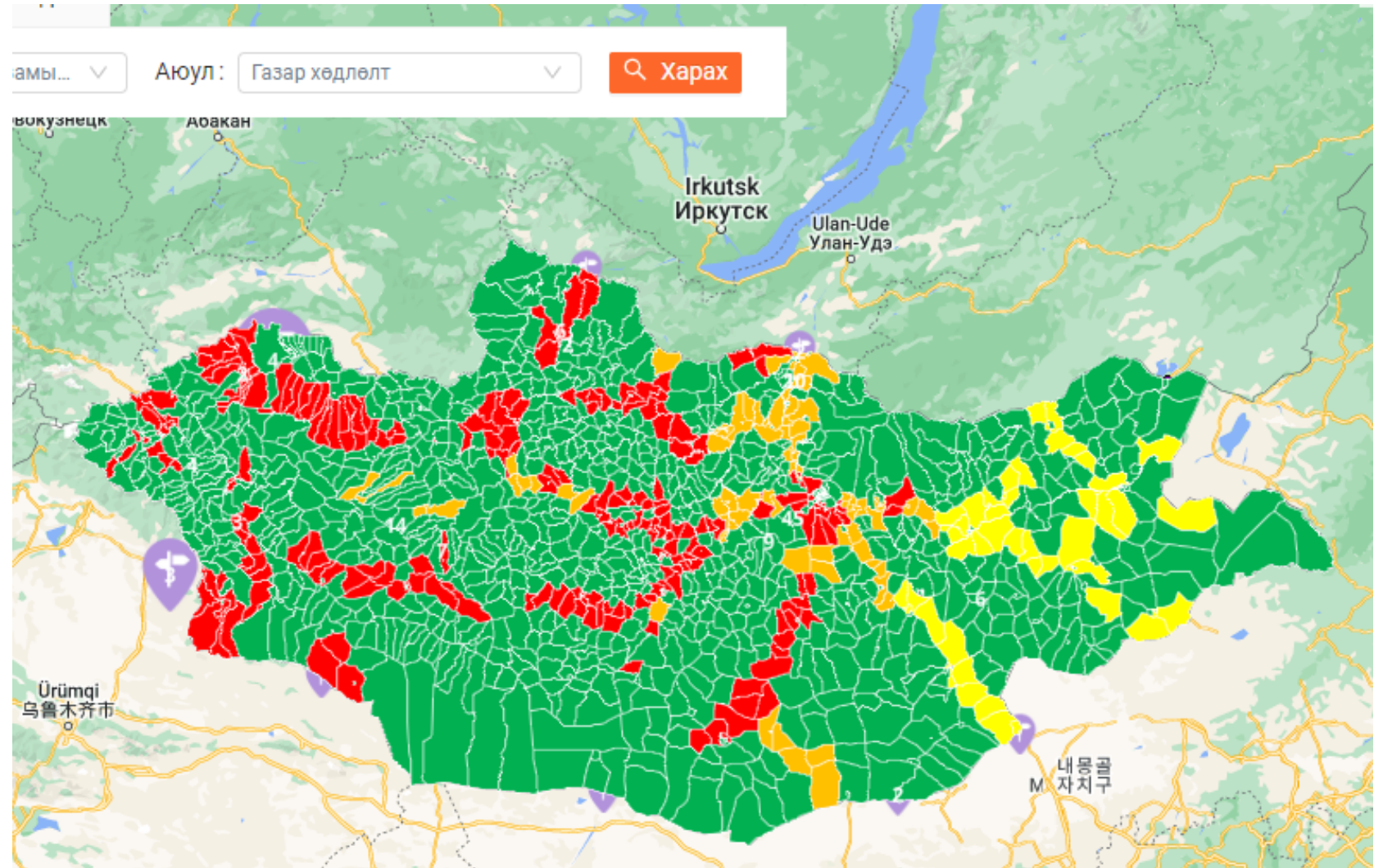


EXPOSURE MAP /ROADS/

Mappings are not completed

Earthquake:

Seismic Intensity	Length of roads by intensity class (km)	% of Total Road Length
Very High	8350.2	55.7
High	2833.2	18.9
Moderate	3803.5	25.4
Low	0.0	0.0
Very Low	0.0	0.0
Total	14986.9	100



AVAILABILITY OF LAND AND INFRASTRUCTURE EXPOSURE

1	Critical infrastructures in Hazard Area
1.1	Hospitals, health facilities
1.2	Education facilities
1.3	Other critical public administration buildings
1.4	Public Monuments
1.4.1	Religious buildings
1.5	Roads
1.6	Bridges
1.7	Airports
1.8	Piers
1.9	Rail Stations
1.10	Transport equipments
1.11	Electricity generation facilities
1.12	Electricity grids
1.13	ICT Equipments
1.14	Dams
1.15	Water supply infrastructure
1.16	Water sewage & treatment systems
1.17	Other critical infrastructures
2	Land
2.1	Land
2.2	Agricultural land
2.3	Forest Areas
2.4	Built-up areas

All types of buildings

Agricultural land
Pasture land

CHALLENGES

Limitation	Needs
Human resources	Training for personnel
Technical capacity	High performance computers
Software capacity	Updated software and high performance servers



THANK YOU FOR YOUR ATTENTION!